

**TOURIST ACCOMMODATION** AUSTRALIA

EMBARGO: 11.30AM (CANBERRA TIME) THURS 30 MAR 2006

C O N T E N T S

	<i>page</i>
Notes	2
Summary of findings	3
List of tables	8

ADDITIONAL INFORMATION

Explanatory notes	56
Glossary	61

I N Q U I R I E S

For further information about these and related statistics, contact the National Information and Referral Service on 1300 135 070.

NOTES

FORTHCOMING ISSUES

<i>ISSUE (Quarter)</i>	<i>RELEASE DATE</i>
March 2006	30 June 2006
June 2006	29 September 2006

.....

ABOUT THIS PUBLICATION

This publication presents results from the December quarter 2005 Survey of Tourist Accommodation (STA) for the following categories of establishments:

- licensed hotels and resorts with facilities and 5 or more rooms
 - motels, private hotels and guest houses with facilities and 5 or more rooms
 - serviced apartments with 5 or more units
 - caravan parks with 40 or more powered sites
 - holiday flats, units and houses of letting entities with 15 or more rooms or units
 - visitor hostels with 25 or more bed spaces.
-

ABBREVIATIONS

'000	thousand
\$/000	thousand dollars
AAA	Australian Automobile Association
ABS	Australian Bureau of Statistics
ACT	Australian Capital Territory
ASGC	Australian Standard Geographical Classification
cat. no.	Catalogue number
GST	goods and services tax
no.	number
NSW	New South Wales
NT	Northern Territory
qtr	quarter
Qld	Queensland
SA	South Australia
SLA	statistical local area
STA	Survey of Tourist Accommodation
Tas.	Tasmania
Vic.	Victoria
WA	Western Australia

Dennis Trewin
Australian Statistician

SUMMARY OF FINDINGS

SEASONALLY ADJUSTED AND TREND

*Hotels, motels and
serviced apartments with
15 or more rooms*

KEY FIGURES, Seasonally adjusted and trend—Australia

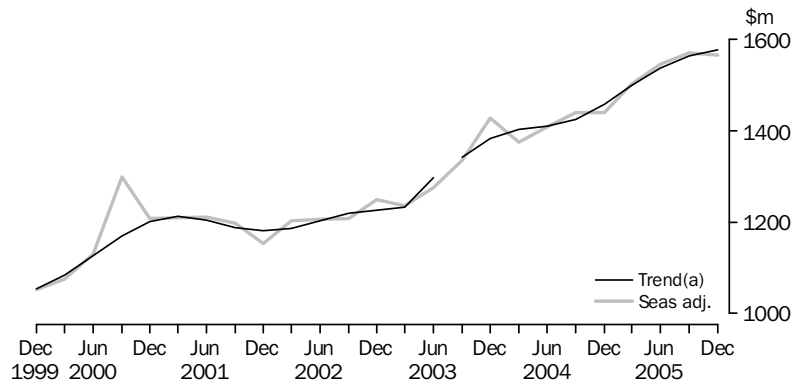
	Dec Qtr 2004	Sep Qtr 2005	Dec Qtr 2005
Seasonally adjusted			
Room occupancy rate (%)	62.0	62.8	62.5
Takings from accommodation ('000)	1 439 907	1 570 834	1 565 452
Trend			
Room occupancy rate (%)	62.6	63.0	62.6
Takings from accommodation ('000)	1 458 637	1 564 059	1 576 537

ACCOMMODATION TAKINGS

The trend estimate of the total accommodation takings for hotels, motels and serviced apartments with 15 or more rooms continued to increase. In December quarter 2005, it increased by 8.1% to \$1,576.5 million compared with December quarter 2004.

The seasonally adjusted estimate of the total accommodation takings rose by 8.7% to \$1,565.5 million from December quarter 2004 to December quarter 2005.

ACCOMMODATION TAKINGS, Seasonally adjusted and trend—Australia



(a) Break in time series between the March and June quarters 2003. See Explanatory Notes.

ROOM OCCUPANCY RATE

The trend estimate of the room occupancy rate for hotels, motels and serviced apartments with 15 or more rooms for the December quarter 2005 (62.6%) was the same as that for the corresponding 2004 quarter.

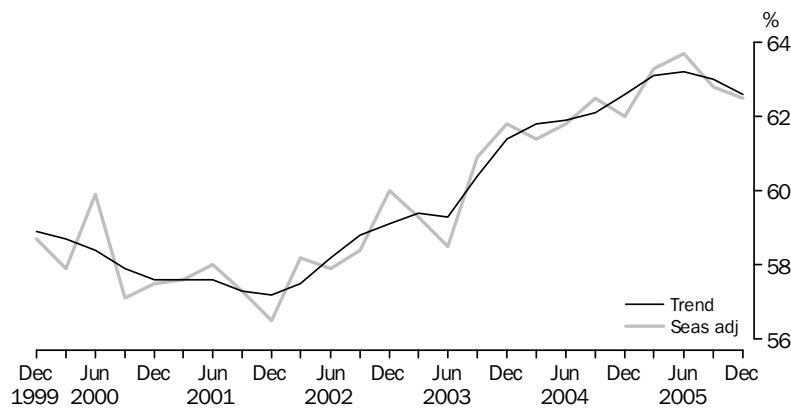
SUMMARY OF FINDINGS *continued*

Hotels, motels and serviced apartments with 15 or more rooms continued

ROOM OCCUPANCY RATE *continued*

The seasonally adjusted estimate of the room occupancy rate increased by 0.5 percentage points to 62.5% from December quarter 2004 to December quarter 2005.

ROOM OCCUPANCY RATE (a), Seasonally adjusted and trend—Australia



(a) Room occupancy rates are not subject to a break in series.

Seasonally adjusted and trend data are not yet available for hotels, motels and serviced apartments with 5 to 14 rooms or 5 or more rooms.

ORIGINAL

Hotels, motels and serviced apartments

The original estimates are impacted by seasonal variations and irregular or non-seasonal influences. Comparisons between quarters should be made with caution.

KEY FIGURES, Original—Australia

	September Qtr 2005	December Qtr 2005
Hotels, motels and serviced apartments with 5 to 14 rooms		
Rooms (<i>no.</i>)	19 583	19 293
Room nights occupied ('000)	806.3	807.5
Room occupancy rate (%)	44.9	46.0
Takings from accommodation (\$'000)	69 336	71 657
Average takings per room night occupied (\$)	86.0	88.7
Hotels, motels and serviced apartments with 15 or more rooms		
Rooms (<i>no.</i>)	211 646	212 784
Room nights occupied ('000)	12 535.4	12 543.5
Room occupancy rate (%)	64.4	64.5
Takings from accommodation (\$'000)	1 618 246	1 650 876
Average takings per room night occupied (\$)	129.1	131.6
Hotels, motels and serviced apartments with 5 or more rooms		
Rooms (<i>no.</i>)	231 229	232 077
Room nights occupied ('000)	13 341.7	13 351.0
Room occupancy rate (%)	62.8	63.0
Takings from accommodation (\$'000)	1 687 582	1 722 533
Average takings per room night occupied (\$)	126.5	129.0

SUMMARY OF FINDINGS *continued*

Hotels, motels and serviced apartments continued

ACCOMMODATION TAKINGS

In December quarter 2005, accommodation takings for hotels, motels and serviced apartments with 5 or more rooms were \$1,722.5 million. The average takings per room night occupied for these establishments were \$129.00.

Accommodation takings for hotels, motels and serviced apartments with 15 or more rooms for December quarter were \$1,650.9 million, at an average of \$131.60 per room night occupied. For establishments with 5 to 14 rooms, accommodation takings were \$71.7 million, at an average of \$88.70 per room night occupied.

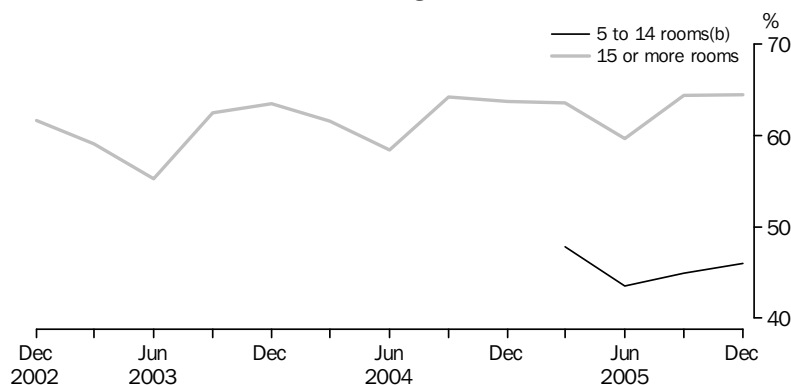
The contributions to accommodation takings in December quarter 2005 for hotels, motels and serviced apartments with 5 or more rooms were highest in New South Wales (\$573.3 million) and Queensland (\$479.2 million).

ROOM OCCUPANCY RATE

The room occupancy rate for hotels, motels and serviced apartments with 5 or more rooms was 63.0% in December quarter 2005.

For hotels, motels and serviced apartments with 15 or more rooms, the room occupancy rate was 64.5%, while for 5 to 14 room hotels, motels and serviced apartments, the room occupancy rate was 46.0%.

ROOM OCCUPANCY RATE (a), Original—Australia



(a) Room occupancy rates are not subject to a break in series.

(b) These establishments were included in the survey from March quarter 2005 onwards.

ROOM NIGHTS OCCUPIED

Total room nights occupied were 13.4 million in December quarter 2005 for hotels, motels and serviced apartments with 5 or more rooms. Room nights occupied were highest in New South Wales (4.2 million) and Queensland (3.8 million).

For hotels, motels and serviced apartments with 15 or more rooms, room nights occupied were 12.5 million in December quarter 2005, while for establishments with 5 to 14 rooms, room nights occupied were 0.8 million.

SUMMARY OF FINDINGS *continued*

Hotels, motels and serviced apartments continued

AVERAGE LENGTH OF STAY

The average length of stay in December quarter 2005 for hotels, motels and serviced apartments with 15 or more rooms was 2.3 days. For establishments with 5 to 14 rooms, the average length of stay for December quarter was 1.8 days.

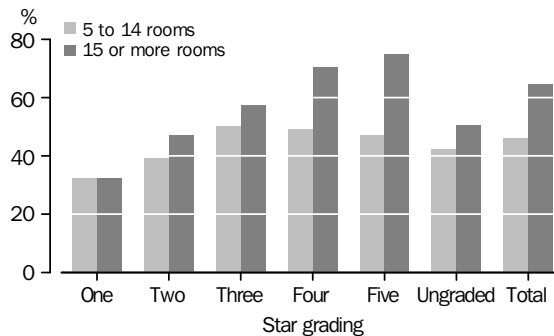
Queensland (2.7 days) reported the longest average length of stay for hotels, motels and serviced apartments with 15 or more rooms, followed by the Australian Capital Territory (2.5 days). The shortest average length of stay was in Tasmania with 1.9 days.

STAR GRADING

In December quarter 2005, the room occupancy rate for five-star hotels, motels and serviced apartments with 5 or more rooms was 74.8% compared with 32.4% for one-star. For hotels, motels and serviced apartments with 15 or more rooms, the room occupancy rate was 75.0% for five-star establishments compared with 32.5% for one-star.

For establishments with 5 to 14 rooms, three-star (50.1%) and four-star (49.4%) establishments had the highest room occupancy rates, compared with one-star establishments at 32.2%.

ROOM OCCUPANCY RATE, Star grading—December Qtr 2005



SUMMARY OF FINDINGS *continued*

Caravan parks, holiday flats, units and houses, and visitor hostels

KEY FIGURES, Australia

	Sep Qtr 2005	Dec Qtr 2005
Caravan parks		
Cabins, flats, units and villas available (no.)	237 318	237 328
Site nights occupied ('000)	11 339	10 879
Site occupancy rate (%)	52.5	50.1
Takings from accommodation (\$'000)	206 315	213 168
Holiday flats, units and houses		
Flats, units and houses available (no.)	27 965	28 392
Unit nights occupied ('000)	1 311	1 343
Unit occupancy rate (%)	51.0	51.6
Takings from accommodation (\$'000)	135 985	150 755
Visitor hostels		
Bed spaces available (no.)	48 226	48 332
Guest nights ('000)	2 010	2 110
Bed occupancy rate (%)	45.5	47.6
Takings from accommodation (\$'000)	46 328	49 893

ACCOMMODATION TAKINGS

In December quarter 2005, accommodation takings for caravan parks were \$213.2 million. New South Wales (\$81.4 million) had the highest accommodation takings for all caravan parks for December quarter 2005.

Short-term caravan park accommodation takings were \$175.4 million in December quarter 2005, while takings for long-term caravan parks were \$37.8 million in that quarter.

Accommodation takings for holiday flats, units and houses were \$150.8 million in December quarter 2005. For visitor hostels, accommodation takings were \$49.9 million.

OCCUPANCY RATE

The site occupancy rate for all caravan parks in December quarter 2005 was 50.1%. Short-term caravan park site occupancy rates were 46.5%, while the rate for long-term caravan parks was 74.4% in December quarter 2005.

For holiday flats, units and houses, the unit occupancy rate was 51.6% in December quarter 2005.

The bed occupancy rate for visitor hostels in December quarter 2005 was 47.6%. New South Wales (58.5%) and Queensland (51.6%) had the highest bed occupancy rate for visitor hostels in December quarter 2005.

LIST OF TABLES

page

AUSTRALIA

ORIGINAL, SEASONALLY ADJUSTED AND TREND

- 1** Hotels, motels and serviced apartments with 15 or more rooms 9

SUMMARY

- 2** Hotels, motels and serviced apartments 10
3 Licensed hotels and resorts 12
4 Motels, private hotels and guest houses 14
5 Serviced apartments 16
6 Caravan parks 18
7 Holiday flats, units and houses 20
8 Visitor hostels 22

STAR GRADING

- 9** Hotels, motels and serviced apartments with 5-14 rooms 23
10 Hotels, motels and serviced apartments with 15 or more rooms 25
11 Hotels, motels and serviced apartments with 5 or more rooms 27

STATES AND TERRITORIES

- 12** Hotels, motels and serviced apartments with 5-14 rooms 29
13 Hotels, motels and serviced apartments with 15 or more rooms 31
14 Hotels, motels and serviced apartments with 5 or more rooms 34
15 Caravan parks, short-term 36
16 Caravan parks, long-term 39
17 Caravan parks, total 42
18 Holiday flats, units and houses, real estate agents 45
19 Holiday flats, units and houses, other letting entities 48
20 Holiday flats, units and houses, total 51
21 Visitor hostels 54

Period	ORIGINAL		SEASONALLY ADJUSTED		TREND	
	Room occupancy rate	Takings from accommodation(a)	Room occupancy rate	Takings from accommodation(a)	Room occupancy rate	Takings from accommodation(a)
	%	'000	%	'000	%	'000
2002						
June Quarter	54.8	1 100 074	57.9	1 206 205	58.2	1 203 106
September Quarter	59.6	1 236 869	58.4	1 207 646	58.8	1 219 151
December Quarter	61.7	1 314 053	60.0	1 248 968	59.1	1 225 536
2003						
March Quarter	59.1	1 244 695	59.3	1 235 647	59.4	1 232 142
June Quarter	55.3	1 159 500	58.5	1 275 181	59.3	1 297 145
September Quarter	62.5	1 373 488	60.9	1 335 506	60.4	1 342 683
December Quarter	63.5	1 499 344	61.8	1 427 740	61.4	1 383 527
2004						
March Quarter	61.6	1 398 573	61.4	1 375 057	61.8	1 404 034
June Quarter	58.4	1 277 463	61.8	1 409 026	61.9	1 409 806
September Quarter	64.2	1 485 716	62.5	1 439 625	62.1	1 425 003
December Quarter	63.7	1 513 029	62.0	1 439 907	62.6	1 458 637
2005						
March Quarter	63.6	1 525 330	63.3	1 502 001	63.1	1 498 994
June Quarter	59.7	1 395 043	63.7	1 546 660	63.2	1 537 878
September Quarter	64.4	1 618 246	62.8	1 570 834	63.0	1 564 059
December Quarter	64.5	1 650 876	62.5	1 565 452	62.6	1 576 537

(a) Break in time series between the March and June quarters 2003. See Explanatory Notes.

SUMMARY OF HOTELS, MOTELS AND SERVICED APARTMENTS, Australia

<i>Period</i>	<i>Establishments</i> no.	<i>Rooms</i> no.	<i>Bed spaces</i> no.	<i>Persons employed</i> no.	<i>Room nights occupied</i> '000	<i>Room occupancy rate</i> %
HOTELS, MOTELS AND SERVICED APARTMENTS WITH 5-14 ROOMS						
2005						
March Quarter	2 130	20 115	58 771	13 000	854.1	47.8
June Quarter	2 115	20 001	58 461	12 680	787.3	43.5
September Quarter	2 061	19 583	57 173	12 454	806.3	44.9
December Quarter	2 018	19 293	56 539	12 705	807.5	46.0
Year ended December 2005	3 255.2	45.6
HOTELS, MOTELS AND SERVICED APARTMENTS WITH 15 OR MORE ROOMS						
2004						
September Quarter	3 985	204 830	583 870	113 046	12 087.9	64.2
December Quarter	3 973	205 495	586 217	112 416	11 994.4	63.7
2005						
March Quarter	4 137	209 022	596 242	113 164	11 841.3	63.6
June Quarter	4 151	209 823	596 395	112 991	11 342.3	59.7
September Quarter	4 172	211 646	601 697	114 947	12 535.4	64.4
December Quarter	4 169	212 784	603 192	114 808	12 543.5	64.5
Year ended December 2004	46 306.5	62.0
Year ended December 2005	48 262.4	63.1
HOTELS, MOTELS AND SERVICED APARTMENTS WITH 5 OR MORE ROOMS						
2005						
March Quarter	6 267	229 137	655 013	126 164	12 695.3	62.2
June Quarter	6 266	229 824	654 856	125 671	12 129.6	58.3
September Quarter	6 233	231 229	658 870	127 401	13 341.7	62.8
December Quarter	6 187	232 077	659 731	127 513	13 351.0	63.0
Year ended December 2005	51 517.6	61.6

.. not applicable

<i>Period</i>	<i>Guest nights occupied</i> '000	<i>Bed occupancy rate</i> %	<i>Guest arrivals</i> '000	<i>Average length of stay</i> days	<i>Takings from accommodation</i> \$'000
---------------	--	------------------------------------	-----------------------------------	---	---

HOTELS, MOTELS AND SERVICED APARTMENTS WITH 5-14 ROOMS

2005

March Quarter	1 648.8	31.7	904.4	1.8	75 613
June Quarter	1 438.4	27.2	824.2	1.7	65 607
September Quarter	1 502.3	28.6	841.3	1.8	69 336
December Quarter	1 520.0	29.6	843.8	1.8	71 657
Year ended December 2005	6 109.4	29.3	3 413.7	1.8	282 213

HOTELS, MOTELS AND SERVICED APARTMENTS WITH 15 OR MORE ROOMS

2004

September Quarter	21 996.2	41.0	9 652.6	2.3	1 485 716
December Quarter	21 845.3	40.7	9 639.2	2.3	1 513 029

2005

March Quarter	21 829.9	41.1	9 341.2	2.3	1 525 330
June Quarter	19 630.0	36.4	8 947.5	2.2	1 395 043
September Quarter	22 495.5	40.7	9 853.1	2.3	1 618 246
December Quarter	22 545.3	41.0	9 771.8	2.3	1 650 876
Year ended December 2004	83 939.6	39.5	36 827.5	2.3	5 674 782
Year ended December 2005	86 500.6	39.8	37 913.6	2.3	6 189 496

HOTELS, MOTELS AND SERVICED APARTMENTS WITH 5 OR MORE ROOMS

2005

March Quarter	23 478.6	40.3	10 245.6	2.3	1 600 943
June Quarter	21 068.4	35.6	9 771.8	2.2	1 460 650
September Quarter	23 997.7	39.6	10 694.4	2.2	1 687 582
December Quarter	24 065.3	40.0	10 615.6	2.3	1 722 533
Year ended December 2005	92 610.0	38.9	41 327.3	2.2	6 471 709

SUMMARY OF LICENSED HOTELS AND RESORTS, Australia

<i>Period</i>	<i>Establishments</i>	<i>Rooms</i>	<i>Bed spaces</i>	<i>Persons employed</i>	<i>Room nights occupied</i>	<i>Room occupancy rate</i>
	no.	no.	no.	no.	'000	%
.....						
LICENSED HOTELS WITH 5-14 ROOMS						
2005						
March Quarter	496	4 600	12 049	7 747	150.9	36.8
June Quarter	491	4 573	12 100	7 525	139.9	33.8
September Quarter	478	4 478	11 864	7 431	148.9	36.2
December Quarter	478	4 487	11 969	7 706	155.0	37.7
Year ended December 2005	594.7	36.1
.....						
LICENSED HOTELS WITH 15 OR MORE ROOMS						
2004						
September Quarter	789	78 777	205 297	70 088	5 021.7	69.3
December Quarter	786	78 574	205 304	69 883	5 035.1	70.0
2005						
March Quarter	816	79 114	206 172	69 759	4 908.5	69.7
June Quarter	820	79 353	205 730	69 485	4 629.7	64.5
September Quarter	820	80 073	206 787	70 484	5 109.4	69.4
December Quarter	812	80 134	206 756	70 560	5 167.3	70.5
Year ended December 2004	19 361.6	67.4
Year ended December 2005	19 814.9	68.5
.....						
LICENSED HOTELS WITH 5 OR MORE ROOMS						
2005						
March Quarter	1 312	83 714	218 221	77 506	5 059.4	67.9
June Quarter	1 311	83 926	217 830	77 010	4 769.6	62.8
September Quarter	1 298	84 551	218 651	77 915	5 258.3	67.6
December Quarter	1 290	84 621	218 725	78 266	5 322.3	68.8
Year ended December 2005	20 409.6	66.8

.. not applicable

SUMMARY OF LICENSED HOTELS AND RESORTS, Australia *continued*

<i>Period</i>	<i>Guest nights occupied</i>	<i>Bed occupancy rate</i>	<i>Guest arrivals</i>	<i>Average length of stay</i>	<i>Takings from accommodation</i>
	'000	%	'000	days	\$'000

LICENSED HOTELS WITH 5-14 ROOMS

2005					
March Quarter	236.6	22.1	137.6	1.7	9 709
June Quarter	213.9	19.5	131.4	1.6	8 864
September Quarter	228.3	20.9	136.7	1.7	9 561
December Quarter	239.2	21.8	144.1	1.7	10 187
Year ended December 2005	918.1	21.1	549.8	1.7	38 320

LICENSED HOTELS WITH 15 OR MORE ROOMS

2004					
September Quarter	8 304.5	44.0	3 586.1	2.3	720 863
December Quarter	8 330.4	44.4	3 653.7	2.3	749 901
2005					
March Quarter	8 157.9	44.5	3 456.8	2.4	749 365
June Quarter	7 272.8	39.1	3 352.1	2.2	674 905
September Quarter	8 320.0	43.8	3 656.3	2.3	777 192
December Quarter	8 417.2	44.6	3 644.0	2.3	809 598
Year ended December 2004	31 864.0	42.7	13 791.5	2.3	2 790 393
Year ended December 2005	32 168.0	43.0	14 109.2	2.3	3 011 061

LICENSED HOTELS WITH 5 OR MORE ROOMS

2005					
March Quarter	8 394.6	43.3	3 594.4	2.3	759 074
June Quarter	7 486.8	38.1	3 483.4	2.1	683 769
September Quarter	8 548.3	42.5	3 793.1	2.3	786 753
December Quarter	8 656.4	43.4	3 788.1	2.3	819 785
Year ended December 2005	33 086.0	41.8	14 659.0	2.3	3 049 381

SUMMARY OF MOTELS, PRIVATE HOTELS AND GUEST HOUSES, Australia

<i>Period</i>	<i>Establishments</i>	<i>Rooms</i>	<i>Bed spaces</i>	<i>Persons employed</i>	<i>Room nights occupied</i>	<i>Room occupancy rate</i>
	no.	no.	no.	no.	'000	%
.....						
MOTELS AND GUEST HOUSES WITH 5-14 ROOMS						
2005						
March Quarter	1 287	12 488	35 487	4 150	545.0	49.4
June Quarter	1 280	12 466	35 227	4 064	512.2	45.5
September Quarter	1 246	12 182	34 332	3 923	510.4	45.7
December Quarter	1 212	11 925	33 785	3 948	504.8	46.8
Year ended December 2005	2 072.5	46.8
.....						
MOTELS AND GUEST HOUSES WITH 15 OR MORE ROOMS						
2004						
September Quarter	2 396	84 452	244 387	29 244	4 397.4	56.7
December Quarter	2 390	85 185	246 227	28 771	4 330.7	55.6
2005						
March Quarter	2 473	86 060	248 577	29 334	4 240.0	55.4
June Quarter	2 476	86 442	249 619	29 381	4 216.6	54.0
September Quarter	2 485	86 440	250 100	29 875	4 573.9	57.6
December Quarter	2 485	86 798	249 385	29 477	4 490.4	56.7
Year ended December 2004	16 888.2	54.6
Year ended December 2005	17 520.8	55.9
.....						
MOTELS AND GUEST HOUSES WITH 5 OR MORE ROOMS						
2005						
March Quarter	3 760	98 548	284 064	33 484	4 785.0	54.6
June Quarter	3 756	98 908	284 846	33 445	4 728.9	52.9
September Quarter	3 731	98 622	284 432	33 798	5 084.3	56.1
December Quarter	3 697	98 723	283 170	33 425	4 995.2	55.5
Year ended December 2005	19 593.3	54.8

.....

.. not applicable

<i>Period</i>	<i>Guest nights occupied</i>	<i>Bed occupancy rate</i>	<i>Guest arrivals</i>	<i>Average length of stay</i>	<i>Takings from accommodation</i>
	'000	%	'000	days	\$'000

MOTELS AND GUEST HOUSES WITH 5-14 ROOMS

2005					
March Quarter	1 013.1	32.4	626.7	1.6	47 461
June Quarter	902.7	28.4	565.5	1.6	42 030
September Quarter	915.4	29.1	573.7	1.6	43 424
December Quarter	919.7	30.1	572.2	1.6	44 374
Year ended December 2005	3 750.9	30.0	2 338.0	1.6	177 290

MOTELS AND GUEST HOUSES WITH 15 OR MORE ROOMS

2004					
September Quarter	7 808.7	34.8	4 412.3	1.8	418 253
December Quarter	7 656.2	34.0	4 291.1	1.8	412 426
2005					
March Quarter	7 622.3	34.5	4 181.8	1.8	413 752
June Quarter	7 132.7	31.6	4 040.5	1.8	400 281
September Quarter	8 003.2	34.8	4 455.8	1.8	452 358
December Quarter	7 783.3	34.3	4 337.3	1.8	443 827
Year ended December 2004	29 828.5	33.4	16 754.6	1.8	1 585 656
Year ended December 2005	30 541.5	33.8	17 015.4	1.8	1 710 219

MOTELS AND GUEST HOUSES WITH 5 OR MORE ROOMS

2005					
March Quarter	8 635.4	34.3	4 808.5	1.8	461 214
June Quarter	8 035.4	31.2	4 605.9	1.7	442 312
September Quarter	8 918.6	34.1	5 029.5	1.8	495 783
December Quarter	8 703.0	33.8	4 909.5	1.8	488 201
Year ended December 2005	34 292.5	33.3	19 353.4	1.8	1 887 509

SUMMARY OF SERVICED APARTMENTS, Australia

<i>Period</i>	<i>Establishments</i>	<i>Rooms</i>	<i>Bed spaces</i>	<i>Persons employed</i>	<i>Room nights occupied</i>	<i>Room occupancy rate</i>
	no.	no.	no.	no.	'000	%
.....						
SERVICED APARTMENTS WITH 5-14 ROOMS						
2005						
March Quarter	347	3 027	11 235	1 103	158.2	58.4
June Quarter	344	2 962	11 134	1 091	135.1	50.1
September Quarter	337	2 923	10 977	1 100	147.1	54.8
December Quarter	328	2 881	10 785	1 051	147.7	56.0
Year ended December 2005	588.0	54.8
.....						
SERVICED APARTMENTS WITH 15 OR MORE ROOMS						
2004						
September Quarter	800	41 601	134 186	13 714	2 668.8	69.9
December Quarter	797	41 736	134 686	13 762	2 628.6	68.6
2005						
March Quarter	848	43 848	141 493	14 071	2 692.8	68.4
June Quarter	855	44 028	141 046	14 125	2 495.9	62.4
September Quarter	867	45 133	144 810	14 588	2 852.1	68.7
December Quarter	872	45 852	147 051	14 771	2 885.8	68.7
Year ended December 2004	10 056.8	66.7
Year ended December 2005	10 926.7	67.1
.....						
SERVICED APARTMENTS WITH 5 OR MORE ROOMS						
2005						
March Quarter	1 195	46 875	152 728	15 174	2 850.9	67.8
June Quarter	1 199	46 990	152 180	15 216	2 631.1	61.7
September Quarter	1 204	48 056	155 787	15 688	2 999.2	67.9
December Quarter	1 200	48 733	157 836	15 822	3 033.5	68.0
Year ended December 2005	11 514.7	66.3

.....

.. not applicable

<i>Period</i>	<i>Guest nights occupied</i> '000	<i>Bed occupancy rate</i> %	<i>Guest arrivals</i> '000	<i>Average length of stay</i> days	<i>Takings from accommodation</i> \$'000
---------------	--	--	-----------------------------------	---	---

SERVICED APARTMENTS WITH 5-14 ROOMS

2005					
March Quarter	399.0	39.7	140.1	2.8	18 443
June Quarter	321.8	31.7	127.4	2.5	14 713
September Quarter	358.5	35.6	130.9	2.7	16 351
December Quarter	361.1	36.6	127.5	2.8	17 096
Year ended December 2005	1 440.4	35.9	525.9	2.7	66 603

SERVICED APARTMENTS WITH 15 OR MORE ROOMS

2004					
September Quarter	5 883.0	47.8	1 654.2	3.6	346 601
December Quarter	5 858.7	47.4	1 694.4	3.5	350 702
2005					
March Quarter	6 049.6	47.7	1 702.6	3.6	362 213
June Quarter	5 224.4	40.8	1 555.0	3.4	319 856
September Quarter	6 172.4	46.3	1 741.0	3.5	388 695
December Quarter	6 344.8	47.1	1 790.4	3.5	397 451
Year ended December 2004	22 247.1	45.7	6 281.3	3.5	1 298 733
Year ended December 2005	23 791.1	45.5	6 789.1	3.5	1 468 215

SERVICED APARTMENTS WITH 5 OR MORE ROOMS

2005					
March Quarter	6 448.6	47.1	1 842.6	3.5	380 656
June Quarter	5 546.2	40.2	1 682.4	3.3	334 569
September Quarter	6 530.9	45.6	1 871.9	3.5	405 046
December Quarter	6 705.9	46.4	1 918.0	3.5	414 548
Year ended December 2005	25 231.5	44.8	7 314.9	3.4	1 534 819

CAPACITY

Period	Establishments no.	On-site vans no.	Other powered sites no.	Unpowered sites no.	Cabins, flats, units and villas no.	Total capacity no.

CARAVAN PARKS, SHORT-TERM (c)

2003						
March Quarter	1 500	13 394	129 564	38 530	22 573	204 061
June Quarter	1 558	14 102	129 907	39 129	23 410	206 548
September Quarter	1 564	13 689	130 478	39 693	23 743	207 603
December Quarter	1 559	13 868	130 564	39 406	24 547	208 385

2005						
March Quarter	1 523	13 942	131 200	39 731	24 791	209 664
June Quarter	1 521	13 563	131 162	39 574	25 160	209 459
September Quarter	1 504	14 055	128 427	38 974	25 005	206 461
December Quarter	1 495	13 930	128 398	39 231	25 191	206 750

CARAVAN PARKS, LONG-TERM (c)

2003						
March Quarter	288	5 705	22 038	2 501	5 853	36 097
June Quarter	283	5 456	21 527	2 410	5 882	35 275
September Quarter	267	5 250	19 855	2 211	5 992	33 308
December Quarter	266	5 075	19 985	2 407	6 326	33 793

2005						
March Quarter	247	4 814	18 582	2 075	6 146	31 617
June Quarter	247	4 858	18 561	2 036	6 226	31 681
September Quarter	240	4 372	18 224	2 256	6 005	30 857
December Quarter	239	4 173	18 117	2 079	6 209	30 578

CARAVAN PARKS, TOTAL

2003						
March Quarter	1 788	19 099	151 602	41 031	28 426	240 158
June Quarter	1 841	19 558	151 434	41 539	29 292	241 823
September Quarter	1 831	18 939	150 333	41 904	29 735	240 911
December Quarter	1 825	18 943	150 549	41 813	30 873	242 178

2005						
March Quarter	1 770	18 756	149 782	41 806	30 937	241 281
June Quarter	1 768	18 421	149 723	41 610	31 386	241 140
September Quarter	1 744	18 427	146 651	41 230	31 010	237 318
December Quarter	1 734	18 103	146 515	41 310	31 400	237 328

- (a) Comprising establishments with 40 or more powered sites and cabins, flats, units and villas.
 (b) Break in time series between the March and June quarters 2003. See Explanatory Notes.
 (c) For definitions of short-term and long-term caravan parks, see Glossary.

<i>Period</i>	<i>Persons employed</i>	<i>Sites occupied by long-term guests</i>	<i>Other sites permanently reserved</i>	<i>Site nights occupied</i>	<i>Site occupancy rate</i>	<i>Takings from accommodation</i>
<i>no.</i>	<i>no.</i>	<i>no.</i>	<i>'000</i>	<i>%</i>	<i>\$'000</i>	
CARAVAN PARKS, SHORT-TERM (c)						
2003						
March Quarter	8 043	19 151	41 841	8 869.7	48.6	152 854
June Quarter	8 215	19 961	40 099	8 917.4	47.7	142 309
September Quarter	8 259	18 923	40 779	9 247.7	49.1	155 353
December Quarter	8 621	19 052	40 947	8 836.9	46.3	161 459
2005						
March Quarter	8 731	19 192	41 175	9 259.1	49.2	183 107
June Quarter	8 683	19 482	41 283	8 832.6	46.6	154 516
September Quarter	8 493	19 408	41 358	9 208.7	49.1	169 549
December Quarter	8 689	19 038	41 405	8 790.0	46.5	175 370
CARAVAN PARKS, LONG-TERM (c)						
2003						
March Quarter	1 510	22 885	1 323	2 495.3	76.9	36 145
June Quarter	1 482	20 885	1 546	2 326.8	72.5	33 638
September Quarter	1 430	20 441	1 332	2 309.4	75.4	35 362
December Quarter	1 456	19 889	1 602	2 354.4	75.7	37 097
2005						
March Quarter	1 334	18 528	1 560	2 175.0	76.4	35 978
June Quarter	1 381	18 362	1 649	2 155.9	74.8	34 001
September Quarter	1 300	18 051	1 560	2 130.0	75.0	36 766
December Quarter	1 327	17 687	1 498	2 088.9	74.4	37 799
CARAVAN PARKS, TOTAL						
2003						
March Quarter	9 553	42 036	43 164	11 365.0	52.9	189 000
June Quarter	9 697	40 846	41 645	11 244.2	51.4	175 947
September Quarter	9 689	39 364	42 111	11 557.1	52.8	190 715
December Quarter	10 077	38 941	42 549	11 191.3	50.4	198 556
2005						
March Quarter	10 065	37 720	42 735	11 434.1	52.8	219 085
June Quarter	10 064	37 844	42 932	10 988.6	50.4	188 516
September Quarter	9 793	37 459	42 918	11 338.7	52.5	206 315
December Quarter	10 016	36 725	42 903	10 878.9	50.1	213 168

(a) Comprising establishments with 40 or more powered sites and cabins, flats, units and villas.

(b) Break in time series between the March and June quarters 2003. See Explanatory Notes.

(c) For definitions of short-term and long-term caravan parks, see Glossary.

CAPACITY

Letting entities(a)	Single bedroom	Multiple bedroom	Total	Bed spaces	Persons employed(b)
no.	no.	no.	no.	no.	no.

REAL ESTATE AGENTS

2003

March Quarter	176	768	12 349	13 117	68 917	..
June Quarter	176	813	12 130	12 943	69 785	..
September Quarter	171	638	12 074	12 712	70 775	..
December Quarter	171	667	12 622	13 289	73 234	..

2005

March Quarter	164	638	12 945	13 583	71 934	..
June Quarter	166	640	12 833	13 473	70 274	..
September Quarter	170	606	13 123	13 729	74 671	..
December Quarter	168	603	13 354	13 957	75 846	..

OTHER LETTING ENTITIES

2003

March Quarter	431	4 296	10 683	14 979	58 591	3 021
June Quarter	427	3 942	10 574	14 516	58 246	2 921
September Quarter	431	4 071	10 511	14 582	58 595	2 934
December Quarter	427	4 213	10 508	14 721	58 041	2 859

2005

March Quarter	422	3 978	10 707	14 685	59 959	2 645
June Quarter	416	3 917	10 546	14 463	59 605	2 640
September Quarter	412	4 159	10 077	14 236	57 397	2 599
December Quarter	415	4 113	10 322	14 435	58 331	2 650

HOLIDAY FLATS, UNITS AND HOUSES, TOTAL

2003

March Quarter	607	5 064	23 032	28 096	127 508	..
June Quarter	603	4 755	22 704	27 459	128 031	..
September Quarter	602	4 709	22 585	27 294	129 370	..
December Quarter	598	4 880	23 130	28 010	131 275	..

2005

March Quarter	586	4 616	23 652	28 268	131 893	..
June Quarter	582	4 557	23 379	27 936	129 879	..
September Quarter	582	4 765	23 200	27 965	132 068	..
December Quarter	583	4 716	23 676	28 392	134 177	..

.. not applicable

(a) The number of owners, managers or real estate agents with 15 or more self-contained units.

(b) Employment numbers exclude real estate agents and their employees.

	<i>Unit nights occupied</i>	<i>Unit occupancy rate</i>	<i>Unit lettings</i>	<i>Average length of stay</i>	<i>Takings from accommodation</i>
	'000	%	'000	days	\$'000
.....					
REAL ESTATE AGENTS					
2003					
March Quarter	510.4	43.2	76.8	6.6	50 505
June Quarter	352.3	29.9	62.3	5.7	26 793
September Quarter	395.4	34.0	60.6	6.5	30 224
December Quarter	488.6	40.0	83.1	5.9	49 387
2005					
March Quarter	510.5	41.8	86.3	5.9	51 241
June Quarter	321.7	26.2	57.8	5.6	23 728
September Quarter	392.0	31.0	66.4	5.9	33 668
December Quarter	437.7	34.1	84.0	5.2	45 320
.....					
OTHER LETTING ENTITIES					
2003					
March Quarter	866.9	64.4	216.4	4.0	90 053
June Quarter	737.2	56.0	199.6	3.7	68 208
September Quarter	917.9	68.6	250.5	3.7	89 061
December Quarter	901.2	66.7	257.2	3.5	98 094
2005					
March Quarter	861.3	65.2	253.4	3.4	102 597
June Quarter	735.1	56.1	231.7	3.2	75 884
September Quarter	919.0	70.3	271.3	3.4	102 317
December Quarter	905.4	68.6	296.4	3.1	105 436
.....					
HOLIDAY FLATS, UNITS AND HOUSES, TOTAL					
2003					
March Quarter	1 377.3	54.5	293.2	4.7	140 558
June Quarter	1 089.5	43.7	261.9	4.2	95 000
September Quarter	1 313.3	52.5	311.0	4.2	119 286
December Quarter	1 389.8	54.0	340.3	4.1	147 481
2005					
March Quarter	1 371.8	54.0	339.7	4.0	153 838
June Quarter	1 056.8	41.7	289.6	3.6	99 612
September Quarter	1 310.9	51.0	337.7	3.9	135 985
December Quarter	1 343.1	51.6	380.4	3.5	150 755

SUMMARY OF VISITOR HOSTELS(a), Australia

	<i>Establishments</i>	<i>Bed spaces</i>	<i>Persons employed</i>	<i>Guest nights occupied</i>	<i>Bed occupancy rate</i>	<i>Guest arrivals</i>	<i>Average length of stay</i>	<i>Takings from accommodation</i>
	no.	no.	no.	no.	%	no.	days	\$'000
2003								
March Quarter	517	50 376	3 214	2 148 267	47.8	880 099	2.4	46 024
June Quarter	506	49 762	3 363	1 964 304	43.9	773 258	2.5	40 544
September Quarter	494	48 578	3 373	1 946 009	44.2	771 840	2.5	41 347
December Quarter	494	48 588	3 506	2 197 632	49.7	875 871	2.5	47 995
2005								
March Quarter	463	47 621	3 499	2 245 535	52.7	858 118	2.6	52 883
June Quarter	456	47 503	3 420	1 939 362	45.2	780 776	2.5	43 184
September Quarter	452	48 226	3 404	2 010 095	45.5	770 540	2.6	46 328
December Quarter	456	48 332	3 337	2 110 213	47.6	822 041	2.6	49 893

(a) Comprising establishments with 25 or more bed spaces.

STAR GRADING

<i>Period</i>	1	2	3	4	5	<i>Ungraded</i>	<i>Total</i>
---------------	---	---	---	---	---	-----------------	--------------

ESTABLISHMENTS, CAPACITY AND EMPLOYMENT (no.)

September Quarter 2005

Establishments	92	331	829	397	20	392	2 061
Rooms	844	3 221	8 595	3 269	155	3 499	19 583
Bed spaces	2 055	9 420	25 430	9 709	361	10 198	57 173
Persons employed	906	2 808	3 362	1 519	108	3 751	12 454

December Quarter 2005

Establishments	91	333	819	377	21	377	2 018
Rooms	846	3 228	8 529	3 139	168	3 383	19 293
Bed spaces	2 084	9 462	25 369	9 360	380	9 884	56 539
Persons employed	953	2 928	3 398	1 507	105	3 814	12 705

ROOM NIGHTS OCCUPIED ('000)

2005

July	8.2	37.8	125.4	46.7	1.9	45.2	265.2
August	8.2	38.2	124.5	45.3	1.9	45.5	263.6
September	8.8	40.0	131.8	47.9	2.0	47.0	277.5
<i>September Quarter</i>	25.1	116.1	381.7	139.9	5.9	137.7	806.3
October	9.0	40.5	137.2	50.3	2.4	44.8	284.2
November	8.4	38.8	127.8	46.4	2.4	42.9	266.7
December	7.5	37.1	124.7	45.2	2.4	39.7	256.6
<i>December Quarter</i>	25.0	116.3	389.7	141.8	7.3	127.4	807.5

ROOM OCCUPANCY RATE (%)

2005

July	31.1	38.0	47.1	46.7	40.4	42.0	43.9
August	31.2	38.4	46.8	45.1	39.0	42.1	43.5
September	34.6	41.5	51.2	49.1	44.0	44.9	47.3
<i>September Quarter</i>	32.3	39.3	48.3	46.9	41.1	43.0	44.9
October	34.6	40.5	52.3	52.0	46.4	44.2	48.1
November	33.2	40.1	50.3	49.5	48.3	43.7	46.6
December	28.7	37.2	47.7	46.5	46.0	39.3	43.4
<i>December Quarter</i>	32.2	39.3	50.1	49.4	46.9	42.4	46.0

GUEST NIGHTS OCCUPIED ('000)

2005

July	12.3	65.6	228.8	101.7	3.7	85.0	497.1
August	12.4	64.4	219.6	93.7	3.6	83.9	477.6
September	13.6	69.5	246.2	104.3	3.9	90.1	527.6
<i>September Quarter</i>	38.3	199.5	694.6	299.7	11.2	258.9	1 502.3
October	13.8	70.5	253.0	105.9	4.4	80.9	528.5
November	12.5	64.6	228.0	97.8	4.5	75.9	483.2
December	11.8	65.2	246.9	104.7	4.7	75.0	508.3
<i>December Quarter</i>	38.0	200.3	728.0	308.4	13.6	231.7	1 520.0

BED OCCUPANCY RATE (%)

2005

July	19.4	22.5	29.0	34.2	33.0	27.1	28.2
August	19.4	22.1	27.9	31.4	32.1	26.6	27.0
September	22.1	24.6	32.3	35.9	36.3	29.6	30.8
<i>September Quarter</i>	20.3	23.1	29.7	33.8	33.8	27.7	28.6
October	21.5	24.1	32.5	36.7	37.1	27.5	30.5
November	19.9	22.8	30.2	35.0	39.5	26.6	28.8
December	18.2	22.4	31.7	36.1	40.3	25.6	29.4
<i>December Quarter</i>	19.9	23.1	31.5	36.0	39.0	26.6	29.6

STAR GRADING

<i>Period</i>	1	2	3	4	5	<i>Ungraded</i>	<i>Total</i>
---------------	---	---	---	---	---	-----------------	--------------

GUEST ARRIVALS ('000)

2005

July	8.0	40.7	136.8	46.5	1.9	45.4	279.3
August	8.0	38.7	131.5	42.9	1.9	43.7	266.7
September	8.8	41.9	146.8	48.8	2.0	47.0	295.2
<i>September Quarter</i>	24.7	121.3	415.0	138.3	5.9	136.1	841.3
October	9.1	43.3	150.1	49.0	2.3	42.0	295.8
November	7.8	39.3	136.2	45.5	2.2	38.7	269.7
December	8.0	40.5	142.8	47.2	2.3	37.5	278.3
<i>December Quarter</i>	24.9	123.2	429.0	141.7	6.7	118.3	843.8

AVERAGE LENGTH OF STAY (days)

2005

July	1.5	1.6	1.7	2.2	1.9	1.9	1.8
August	1.6	1.7	1.7	2.2	1.9	1.9	1.8
September	1.6	1.7	1.7	2.1	2.0	1.9	1.8
<i>September Quarter</i>	1.6	1.6	1.7	2.2	1.9	1.9	1.8
October	1.5	1.6	1.7	2.2	1.9	1.9	1.8
November	1.6	1.6	1.7	2.1	2.1	2.0	1.8
December	1.5	1.6	1.7	2.2	2.1	2.0	1.8
<i>December Quarter</i>	1.5	1.6	1.7	2.2	2.0	2.0	1.8

TAKINGS FROM ACCOMMODATION (\$'000)

2005

July	423	2 441	9 736	5 965	357	4 003	22 925
August	435	2 424	9 609	5 512	363	4 036	22 379
September	475	2 570	10 442	6 123	390	4 032	24 032
<i>September Quarter</i>	1 332	7 435	29 788	17 600	1 109	12 071	69 336
October	476	2 593	10 911	6 688	522	3 608	24 798
November	430	2 475	10 033	5 998	531	3 513	22 980
December	412	2 498	10 519	6 381	528	3 540	23 880
<i>December Quarter</i>	1 319	7 566	31 463	19 067	1 581	10 661	71 657

AVERAGE TAKINGS PER ROOM NIGHT OCCUPIED (\$)

2005

July	51.9	64.5	77.6	127.6	183.7	88.6	86.4
August	53.2	63.4	77.2	121.8	193.8	88.7	84.9
September	54.1	64.3	79.2	127.8	190.4	85.8	86.6
<i>September Quarter</i>	53.1	64.1	78.0	125.8	189.3	87.7	86.0
October	52.8	64.0	79.5	133.0	215.8	80.5	87.3
November	51.0	63.8	78.5	129.3	218.2	81.9	86.2
December	54.8	67.4	84.3	141.2	220.2	89.2	93.1
<i>December Quarter</i>	52.8	65.0	80.7	134.4	218.1	83.7	88.7

AVERAGE TAKINGS PER ROOM NIGHT AVAILABLE (\$)

2005

July	16.2	24.5	36.6	59.6	74.3	37.2	37.9
August	16.6	24.4	36.1	54.9	75.6	37.4	37.0
September	18.8	26.6	40.5	62.7	83.8	38.6	41.0
<i>September Quarter</i>	17.2	25.2	37.7	59.0	77.8	37.7	38.6
October	18.3	26.0	41.6	69.2	100.2	35.6	41.9
November	16.9	25.6	39.5	64.1	105.4	35.8	40.1
December	15.7	25.1	40.2	65.7	101.4	35.0	40.4
<i>December Quarter</i>	17.0	25.6	40.5	66.4	102.3	35.5	40.8

STAR GRADING

<i>Period</i>	1	2	3	4	5	<i>Ungraded</i>	<i>Total</i>
---------------	---	---	---	---	---	-----------------	--------------

ESTABLISHMENTS, CAPACITY AND EMPLOYMENT (no.)

December Quarter 2004

Establishments	42	302	1 944	1 368	113	204	3 973
Rooms	1 269	9 672	71 521	93 012	23 431	6 590	205 495
Bed spaces	4 520	27 496	208 205	269 094	58 487	18 415	586 217
Persons employed	467	3 768	24 531	47 210	33 591	2 849	112 416

December Quarter 2005

Establishments	50	300	2 025	1 467	111	216	4 169
Rooms	1 499	9 415	73 305	98 504	23 541	6 520	212 784
Bed spaces	4 927	26 544	213 281	281 660	58 906	17 874	603 192
Persons employed	587	3 719	24 507	49 315	33 478	3 202	114 808

ROOM NIGHTS OCCUPIED ('000)

2004

<i>December Quarter</i>	34.5	405.3	3 705.8	5 961.9	1 615.2	271.7	11 994.4
-------------------------	------	-------	---------	---------	---------	-------	----------

2005

October	15.0	140.1	1 388.7	2 247.5	560.9	98.9	4 451.1
November	14.1	134.3	1 299.5	2 188.2	569.4	96.3	4 301.8
December	13.7	127.5	1 150.2	1 917.3	491.7	90.1	3 790.5
<i>December Quarter</i>	42.8	402.0	3 838.3	6 352.9	1 622.1	285.4	12 543.5

ROOM OCCUPANCY RATE (%)

2004

<i>December Quarter</i>	31.6	46.3	56.6	69.7	75.0	46.7	63.7
-------------------------	------	------	------	------	------	------	------

2005

October	33.7	48.5	61.7	73.8	77.0	51.9	68.0
November	32.8	48.1	59.6	74.2	80.7	52.5	67.8
December	31.0	44.1	51.1	62.9	67.5	47.3	57.8
<i>December Quarter</i>	32.5	46.9	57.4	70.2	75.0	50.5	64.5

GUEST NIGHTS OCCUPIED ('000)

2004

<i>December Quarter</i>	56.1	709.2	6 897.5	11 096.0	2 621.2	465.3	21 845.3
-------------------------	------	-------	---------	----------	---------	-------	----------

2005

October	24.2	242.5	2 507.9	4 071.5	893.9	157.2	7 897.1
November	21.7	229.9	2 275.9	3 795.2	884.8	148.5	7 355.8
December	22.4	230.2	2 223.1	3 804.0	862.4	150.4	7 292.3
<i>December Quarter</i>	68.2	702.5	7 006.8	11 670.6	2 641.1	456.0	22 545.3

BED OCCUPANCY RATE (%)

2004

<i>December Quarter</i>	15.1	28.6	36.2	44.9	48.8	28.9	40.7
-------------------------	------	------	------	------	------	------	------

2005

October	16.9	29.8	38.3	46.8	49.0	30.7	42.6
November	15.6	29.3	35.9	45.0	50.1	30.0	41.0
December	15.6	28.3	34.0	43.6	47.3	29.4	39.3
<i>December Quarter</i>	16.1	29.1	36.1	45.1	48.8	30.0	41.0

Period	STAR GRADING						Total
	1	2	3	4	5	Ungraded	
GUEST ARRIVALS ('000)							
2004							
December Quarter	36.6	404.5	3 462.1	4 491.7	1 040.8	203.5	9 639.2
2005							
October	12.9	141.2	1 221.6	1 620.4	354.4	71.4	3 421.8
November	11.1	131.0	1 109.4	1 545.7	359.7	67.1	3 224.0
December	12.1	131.8	1 092.3	1 485.3	338.2	66.2	3 125.9
December Quarter	36.1	403.9	3 423.3	4 651.5	1 052.3	204.7	9 771.8
AVERAGE LENGTH OF STAY (days)							
2004							
December Quarter	1.5	1.8	2.0	2.5	2.5	2.3	2.3
2005							
October	1.9	1.7	2.1	2.5	2.5	2.2	2.3
November	2.0	1.8	2.1	2.5	2.5	2.2	2.3
December	1.8	1.7	2.0	2.6	2.5	2.3	2.3
December Quarter	1.9	1.7	2.0	2.5	2.5	2.2	2.3
TAKINGS FROM ACCOMMODATION (\$'000)							
2004							
December Quarter	2 094	27 814	338 432	777 825	338 041	28 823	1 513 029
2005							
October	943	10 133	129 138	309 212	120 058	9 507	578 990
November	850	9 595	119 582	298 408	121 370	9 287	559 091
December	871	9 559	110 931	273 343	109 175	8 915	512 795
December Quarter	2 663	29 287	359 651	880 963	350 603	27 709	1 650 876
AVERAGE TAKINGS PER ROOM NIGHT OCCUPIED (\$)							
2004							
December Quarter	60.8	68.6	91.3	130.5	209.3	106.1	126.1
2005							
October	63.0	72.3	93.0	137.6	214.0	96.1	130.1
November	60.4	71.4	92.0	136.4	213.1	96.4	130.0
December	63.4	75.0	96.4	142.6	222.0	98.9	135.3
December Quarter	62.3	72.9	93.7	138.7	216.1	97.1	131.6
AVERAGE TAKINGS PER ROOM NIGHT AVAILABLE (\$)							
2004							
December Quarter	19.2	31.7	51.7	91.0	157.0	49.5	80.4
2005							
October	21.2	35.1	57.4	101.6	164.7	49.9	88.4
November	19.8	34.4	54.9	101.1	172.0	50.6	88.2
December	19.6	33.1	49.3	89.7	149.8	46.8	78.3
December Quarter	20.2	34.2	53.8	97.4	162.1	49.1	84.9

STAR GRADING

<i>Period</i>	1	2	3	4	5	<i>Ungraded</i>	<i>Total</i>
---------------	---	---	---	---	---	-----------------	--------------

ESTABLISHMENTS, CAPACITY AND EMPLOYMENT (no.)

September Quarter 2005

Establishments	139	637	2 850	1 855	137	615	6 233
Rooms	2 209	12 782	81 061	100 739	24 769	9 669	231 229
Bed spaces	6 590	36 634	237 252	289 981	61 616	26 797	658 870
Persons employed	1 550	6 698	28 090	49 684	34 373	7 006	127 401

December Quarter 2005

Establishments	141	633	2 844	1 844	132	593	6 187
Rooms	2 345	12 643	81 834	101 643	23 709	9 903	232 077
Bed spaces	7 011	36 006	238 650	291 020	59 286	27 758	659 731
Persons employed	1 540	6 647	27 905	50 822	33 583	7 016	127 513

ROOM NIGHTS OCCUPIED ('000)

2005

July	29.5	178.8	1 416.3	2 091.2	537.7	138.1	4 391.5
August	31.2	178.4	1 421.0	2 139.9	580.5	140.1	4 491.1
September	27.2	180.2	1 463.5	2 112.6	534.4	141.3	4 459.1
September Quarter	87.8	537.4	4 300.8	6 343.6	1 652.5	419.5	13 341.7
October	24.0	180.6	1 525.9	2 297.8	563.3	143.7	4 735.3
November	22.5	173.1	1 427.3	2 234.5	571.9	139.2	4 568.5
December	21.3	164.6	1 274.9	1 962.5	494.1	129.8	4 047.1
December Quarter	67.7	518.3	4 228.1	6 494.8	1 629.3	412.8	13 351.0

ROOM OCCUPANCY RATE (%)

2005

July	43.4	45.2	56.4	67.0	70.0	46.3	61.3
August	45.9	45.1	56.6	68.6	75.6	46.9	62.7
September	41.0	47.0	60.2	70.0	71.9	48.8	64.3
September Quarter	43.5	45.8	57.7	68.5	72.5	47.3	62.8
October	34.1	46.4	60.7	73.2	76.7	49.2	66.3
November	32.9	46.0	58.7	73.4	80.5	49.4	66.1
December	30.1	42.4	50.7	62.4	67.3	44.5	56.7
December Quarter	32.4	44.9	56.7	69.6	74.8	47.7	63.0

GUEST NIGHTS OCCUPIED ('000)

2005

July	59.4	319.6	2 667.6	3 892.6	877.6	246.3	8 063.0
August	61.4	312.5	2 566.1	3 749.7	905.9	242.8	7 838.4
September	47.2	316.7	2 739.0	3 883.3	858.5	251.7	8 096.3
September Quarter	167.9	948.7	7 972.8	11 525.6	2 642.0	740.8	23 997.7
October	38.0	313.0	2 760.9	4 177.4	898.3	238.1	8 425.6
November	34.1	294.4	2 503.9	3 893.0	889.3	224.3	7 839.0
December	34.1	295.3	2 470.0	3 908.7	867.1	225.3	7 800.6
December Quarter	106.2	902.8	7 734.8	11 979.0	2 654.7	687.7	24 065.3

BED OCCUPANCY RATE (%)

2005

July	29.2	28.2	36.3	43.3	45.9	29.8	39.5
August	30.2	27.5	34.9	41.8	47.4	29.3	38.4
September	23.9	28.8	38.5	44.7	46.4	31.4	41.0
September Quarter	27.8	28.2	36.6	43.2	46.6	30.1	39.6
October	18.3	28.3	37.7	46.5	48.9	29.5	41.6
November	17.0	27.6	35.3	44.7	50.1	28.8	39.9
December	16.4	26.7	33.7	43.4	47.3	28.0	38.5
December Quarter	17.2	27.5	35.6	44.8	48.7	28.8	40.0

STAR GRADING

<i>Period</i>	1	2	3	4	5	<i>Ungraded</i>	<i>Total</i>
---------------	---	---	---	---	---	-----------------	--------------

GUEST ARRIVALS ('000)

2005

July	27.8	187.6	1 323.5	1 575.6	353.2	111.4	3 579.2
August	26.7	179.1	1 281.2	1 534.9	357.9	110.1	3 489.9
September	24.2	185.9	1 380.8	1 577.6	341.8	115.0	3 625.3
<i>September Quarter</i>	78.7	552.7	3 985.5	4 688.1	1 052.8	336.6	10 694.4
October	22.0	184.5	1 371.7	1 669.4	356.6	113.4	3 717.6
November	18.9	170.3	1 245.6	1 591.2	361.9	105.9	3 493.7
December	20.1	172.3	1 235.1	1 532.5	340.5	103.7	3 404.2
<i>December Quarter</i>	61.0	527.1	3 852.4	4 793.2	1 059.0	323.0	10 615.6

AVERAGE LENGTH OF STAY (*days*)

2005

July	2.1	1.7	2.0	2.5	2.5	2.2	2.3
August	2.3	1.7	2.0	2.4	2.5	2.2	2.2
September	2.0	1.7	2.0	2.5	2.5	2.2	2.2
<i>September Quarter</i>	2.1	1.7	2.0	2.5	2.5	2.2	2.2
October	1.7	1.7	2.0	2.5	2.5	2.1	2.3
November	1.8	1.7	2.0	2.4	2.5	2.1	2.2
December	1.7	1.7	2.0	2.6	2.5	2.2	2.3
<i>December Quarter</i>	1.7	1.7	2.0	2.5	2.5	2.1	2.3

TAKINGS FROM ACCOMMODATION (\$'000)

2005

July	2 133	13 369	132 820	278 263	109 389	14 613	550 587
August	2 858	13 343	132 123	289 745	121 789	14 560	574 418
September	1 948	12 863	135 798	288 056	110 270	13 642	562 577
<i>September Quarter</i>	6 939	39 574	400 741	856 064	341 447	42 815	1 687 582
October	1 419	12 726	140 049	315 900	120 580	13 115	603 788
November	1 279	12 070	129 615	304 406	121 901	12 799	582 071
December	1 284	12 057	121 450	279 725	109 703	12 455	536 674
<i>December Quarter</i>	3 982	36 853	391 114	900 030	352 184	38 370	1 722 533

AVERAGE TAKINGS PER ROOM NIGHT OCCUPIED (\$)

2005

July	72.4	74.8	93.8	133.1	203.5	105.8	125.4
August	91.6	74.8	93.0	135.4	209.8	103.9	127.9
September	71.7	71.4	92.8	136.4	206.3	96.5	126.2
<i>September Quarter</i>	79.0	73.6	93.2	134.9	206.6	102.1	126.5
October	59.2	70.5	91.8	137.5	214.0	91.2	127.5
November	56.9	69.7	90.8	136.2	213.2	91.9	127.4
December	60.4	73.3	95.3	142.5	222.0	96.0	132.6
<i>December Quarter</i>	58.8	71.1	92.5	138.6	216.2	93.0	129.0

AVERAGE TAKINGS PER ROOM NIGHT AVAILABLE (\$)

2005

July	31.4	33.8	52.9	89.2	142.5	49.0	76.9
August	42.1	33.7	52.6	92.9	158.6	48.7	80.2
September	29.4	33.6	55.9	95.4	148.4	47.1	81.2
<i>September Quarter</i>	34.3	33.7	53.8	92.5	149.8	48.3	79.4
October	20.2	32.7	55.7	100.6	164.3	44.9	84.6
November	18.7	32.1	53.3	100.0	171.6	45.4	84.2
December	18.2	31.0	48.3	88.9	149.5	42.7	75.1
<i>December Quarter</i>	19.0	32.0	52.4	96.5	161.7	44.3	81.3

<i>Period</i>	<i>New South Wales</i>	<i>Victoria</i>	<i>Queensland</i>	<i>South Australia</i>	<i>Western Australia</i>	<i>Tasmania</i>	<i>Northern Territory</i>	<i>Australian Capital Territory</i>	<i>Australia</i>
ESTABLISHMENTS (no.)									
2005									
March Quarter	667	513	471	178	135	144	19	3	2 130
June Quarter	664	512	472	174	134	137	19	3	2 115
September Quarter	656	498	466	162	133	132	12	2	2 061
December Quarter	641	485	455	163	132	128	12	2	2 018
ROOMS (no.)									
2005									
March Quarter	6 523	4 868	4 639	1 612	1 122	1 126	np	np	20 115
June Quarter	6 479	4 869	4 642	1 582	1 113	np	197	np	20 001
September Quarter	6 443	4 739	4 606	1 504	1 095	np	128	np	19 583
December Quarter	6 329	4 657	4 523	1 524	1 080	1 041	np	np	19 293
BED SPACES (no.)									
2005									
March Quarter	18 794	13 847	14 404	4 360	3 533	3 173	np	np	58 771
June Quarter	18 654	13 870	14 555	4 269	3 550	np	565	np	58 461
September Quarter	18 688	13 421	14 299	4 065	3 485	np	347	np	57 173
December Quarter	18 538	13 106	14 036	4 194	3 434	2 839	np	np	56 539
PERSONS EMPLOYED (no.)									
2005									
March Quarter	3 416	3 060	2 427	1 959	955	1 090	np	np	13 000
June Quarter	3 443	2 969	2 488	1 813	1 012	np	91	np	12 680
September Quarter	3 324	2 951	2 599	1 695	962	np	67	np	12 454
December Quarter	3 429	2 991	2 648	1 787	915	876	np	np	12 705
ROOM NIGHTS OCCUPIED ('000)									
2005									
March Quarter	272.9	206.8	206.7	59.0	41.9	58.8	np	np	854.1
June Quarter	246.7	180.0	219.7	51.2	43.0	np	7.8	np	787.3
September Quarter	259.3	165.4	250.3	50.7	46.0	np	4.4	np	806.3
December Quarter	253.2	183.0	222.4	55.7	45.4	43.7	np	np	807.5
ROOM OCCUPANCY RATE (%)									
2005									
March Quarter	47.4	48.0	49.8	41.2	42.6	58.0	np	np	47.8
June Quarter	42.2	40.9	52.0	35.6	42.6	np	43.6	np	43.5
September Quarter	43.8	38.0	59.2	36.8	45.9	np	37.6	np	44.9
December Quarter	44.2	43.4	53.6	39.8	46.6	45.8	np	np	46.0
GUEST NIGHTS OCCUPIED ('000)									
2005									
March Quarter	530.0	392.0	400.7	104.9	93.7	113.9	np	np	1 648.8
June Quarter	445.2	325.9	406.0	86.1	87.8	np	16.4	np	1 438.4
September Quarter	483.8	306.0	464.8	87.8	96.0	np	8.3	np	1 502.3
December Quarter	477.7	344.7	415.2	97.3	95.2	81.4	np	np	1 520.0

np not available for publication but included in totals where applicable, unless otherwise indicated

<i>Period</i>	<i>New South Wales</i>	<i>Victoria</i>	<i>Queensland</i>	<i>South Australia</i>	<i>Western Australia</i>	<i>Tasmania</i>	<i>Northern Territory</i>	<i>Australian Capital Territory</i>	<i>Australia</i>
BED OCCUPANCY RATE (%)									
2005									
March Quarter	32.1	32.1	31.1	27.1	30.5	39.9	np	np	31.7
June Quarter	26.5	26.0	30.7	22.2	27.1	np	31.9	np	27.2
September Quarter	28.2	24.8	35.4	23.6	30.1	np	25.9	np	28.6
December Quarter	28.5	29.1	32.3	25.3	30.6	31.2	np	np	29.6
GUEST ARRIVALS ('000)									
2005									
March Quarter	305.2	233.2	198.7	54.4	40.1	65.2	np	np	904.4
June Quarter	278.9	188.6	217.2	46.2	41.4	np	8.2	np	824.2
September Quarter	293.1	180.0	234.8	49.9	44.3	np	5.0	np	841.3
December Quarter	282.5	205.7	207.2	52.9	42.0	48.4	np	np	843.8
AVERAGE LENGTH OF STAY (days)									
2005									
March Quarter	1.7	1.7	2.0	1.9	2.3	1.7	np	np	1.8
June Quarter	1.6	1.7	1.9	1.9	2.1	np	2.0	np	1.7
September Quarter	1.7	1.7	2.0	1.8	2.2	np	1.6	np	1.8
December Quarter	1.7	1.7	2.0	1.8	2.3	1.7	np	np	1.8
TAKINGS FROM ACCOMMODATION (\$'000)									
2005									
March Quarter	25 362	18 288	15 847	4 633	4 408	6 449	np	np	75 613
June Quarter	20 737	15 542	16 205	3 976	4 423	np	692	np	65 607
September Quarter	23 501	14 843	19 231	3 890	4 773	np	274	np	69 336
December Quarter	22 818	16 803	17 694	4 545	4 992	4 528	np	np	71 657
AVERAGE TAKINGS PER ROOM NIGHT OCCUPIED (\$)									
2005									
March Quarter	92.9	88.4	76.7	78.5	105.1	109.7	np	np	88.5
June Quarter	84.1	86.3	73.8	77.6	102.9	np	88.6	np	83.3
September Quarter	90.6	89.7	76.8	76.7	103.6	np	61.8	np	86.0
December Quarter	90.1	91.8	79.5	81.6	109.9	103.5	np	np	88.7
AVERAGE TAKINGS PER ROOM NIGHT AVAILABLE (\$)									
2005									
March Quarter	44.0	42.5	38.2	32.3	44.8	63.6	np	np	42.4
June Quarter	35.4	35.3	38.4	27.6	43.8	np	38.6	np	36.3
September Quarter	39.7	34.1	45.5	28.2	47.6	np	23.3	np	38.6
December Quarter	39.8	39.9	42.7	32.5	51.2	47.5	np	np	40.8

np not available for publication but included in totals where applicable, unless otherwise indicated

Period	New South Wales	Victoria	Queensland	South Australia	Western Australia	Tasmania	Northern Territory	Australian Capital Territory	Australia
ESTABLISHMENTS (no.)									
2004									
September Quarter	1 352	739	1 016	245	340	146	91	56	3 985
December Quarter	1 346	741	1 010	242	344	144	90	56	3 973
2005									
March Quarter	1 393	776	1 058	255	351	153	93	58	4 137
June Quarter	1 396	780	1 063	257	350	154	93	58	4 151
September Quarter	1 406	781	1 069	258	350	154	95	59	4 172
December Quarter	1 405	781	1 069	254	355	153	94	58	4 169
ROOMS (no.)									
2004									
September Quarter	64 467	35 299	55 192	11 886	20 375	6 210	6 524	4 877	204 830
December Quarter	64 624	35 353	55 473	11 487	20 937	6 228	6 514	4 879	205 495
2005									
March Quarter	65 986	36 371	56 610	11 741	20 646	6 331	6 399	4 938	209 022
June Quarter	66 227	36 443	56 652	11 779	20 890	6 401	6 472	4 959	209 823
September Quarter	67 506	36 535	56 896	11 873	20 807	6 519	6 541	4 969	211 646
December Quarter	67 757	36 681	57 127	11 726	21 687	6 419	6 477	4 910	212 784
BED SPACES (no.)									
2004									
September Quarter	179 203	95 565	169 178	33 242	56 305	18 210	18 779	13 388	583 870
December Quarter	180 179	95 549	170 636	32 072	57 310	18 311	18 672	13 488	586 217
2005									
March Quarter	184 025	98 571	173 322	32 375	57 073	18 555	18 769	13 552	596 242
June Quarter	183 885	98 663	173 124	32 581	56 981	18 528	18 977	13 656	596 395
September Quarter	186 668	98 992	174 612	32 970	56 996	18 565	19 062	13 832	601 697
December Quarter	186 259	99 226	175 723	32 173	58 741	18 614	18 873	13 583	603 192
PERSONS EMPLOYED (no.)									
2004									
September Quarter	32 190	21 855	31 882	7 139	9 817	4 194	3 285	2 684	113 046
December Quarter	32 265	21 228	32 217	7 027	9 922	4 399	2 833	2 525	112 416
2005									
March Quarter	32 744	21 529	31 612	7 202	10 078	4 606	2 845	2 548	113 164
June Quarter	32 735	21 608	31 425	7 199	9 968	4 421	3 163	2 472	112 991
September Quarter	34 076	21 650	31 736	7 241	10 082	4 555	3 072	2 535	114 947
December Quarter	33 813	21 659	31 790	7 280	10 265	4 643	2 979	2 379	114 808
ROOM NIGHTS OCCUPIED ('000)									
2004									
September Quarter	3 712.6	1 933.4	3 682.2	607.0	1 135.5	247.3	453.7	316.2	12 087.9
December Quarter	3 756.7	2 003.3	3 432.1	648.5	1 174.6	354.9	327.1	297.2	11 994.4
2005									
March Quarter	3 816.5	2 141.5	3 139.5	639.8	1 129.4	414.5	265.7	294.4	11 841.3
June Quarter	3 488.3	1 953.6	3 197.1	599.6	1 119.6	303.0	368.7	312.5	11 342.3
September Quarter	3 849.4	2 011.8	3 783.8	630.2	1 214.0	265.4	456.5	324.3	12 535.4
December Quarter	3 906.0	2 126.0	3 556.9	664.0	1 274.2	363.9	331.5	320.9	12 543.5
Year ended December 2004	14 552.5	7 726.2	13 264.8	2 466.4	4 415.2	1 302.2	1 373.7	1 205.6	46 306.5
Year ended December 2005	15 060.2	8 232.9	13 677.2	2 533.7	4 737.2	1 346.8	1 422.4	1 252.1	48 262.4

<i>Period</i>	<i>New South Wales</i>	<i>Victoria</i>	<i>Queensland</i>	<i>South Australia</i>	<i>Western Australia</i>	<i>Tasmania</i>	<i>Northern Territory</i>	<i>Australian Capital Territory</i>	<i>Australia</i>
ROOM OCCUPANCY RATE (%)									
2004									
September Quarter	62.7	59.6	72.6	55.5	60.7	43.3	75.6	70.5	64.2
December Quarter	63.8	62.1	67.3	61.4	61.3	61.9	54.6	66.4	63.7
2005									
March Quarter	65.4	66.3	62.0	60.6	61.0	72.8	46.3	66.2	63.6
June Quarter	58.5	59.4	62.0	56.0	59.1	52.1	63.2	69.2	59.7
September Quarter	62.0	60.0	72.3	57.8	63.5	44.3	75.9	70.9	64.4
December Quarter	63.5	63.7	67.8	61.6	64.0	61.6	55.7	71.0	64.5
Year ended December 2004	62.1	60.0	65.8	57.3	58.9	57.7	58.1	67.1	62.0
Year ended December 2005	62.3	62.4	66.1	59.0	61.9	57.6	60.4	69.4	63.1
GUEST NIGHTS OCCUPIED ('000)									
2004									
September Quarter	6 597.5	3 282.3	7 401.3	978.8	1 942.0	437.8	810.7	545.9	21 996.2
December Quarter	6 605.3	3 391.3	6 999.8	1 078.9	2 077.4	646.5	558.3	487.7	21 845.3
2005									
March Quarter	6 846.8	3 725.7	6 464.7	1 068.9	1 990.7	806.7	447.9	478.5	21 829.9
June Quarter	5 856.9	3 199.1	6 131.6	942.3	1 835.5	540.3	633.0	491.4	19 630.0
September Quarter	6 730.0	3 375.0	7 500.0	989.7	2 050.4	463.2	817.1	570.3	22 495.5
December Quarter	6 849.3	3 572.1	7 128.6	1 098.1	2 170.2	654.8	556.2	516.1	22 545.3
Year ended December 2004	25 622.4	13 092.9	26 697.1	4 050.6	7 701.4	2 399.3	2 393.9	1 982.0	83 939.6
Year ended December 2005	26 282.9	13 871.9	27 224.8	4 099.0	8 046.7	2 464.9	2 454.2	2 056.3	86 500.6
BED OCCUPANCY RATE (%)									
2004									
September Quarter	40.1	37.4	47.6	32.0	37.6	26.2	46.9	44.3	41.0
December Quarter	40.3	39.0	44.6	36.6	39.6	38.4	32.5	39.4	40.7
2005									
March Quarter	42.2	42.7	41.6	36.7	38.9	48.3	26.7	39.2	41.1
June Quarter	35.4	36.0	38.9	31.8	35.5	32.1	37.0	39.5	36.4
September Quarter	39.2	37.2	46.7	32.6	39.2	27.2	46.6	44.8	40.7
December Quarter	40.6	39.7	44.2	37.1	40.2	38.2	32.1	41.3	41.0
Year ended December 2004	39.5	37.6	43.2	33.7	37.4	36.2	35.1	40.0	39.5
Year ended December 2005	39.3	38.9	42.9	34.5	38.5	36.4	35.7	41.3	39.8
GUEST ARRIVALS ('000)									
2004									
September Quarter	3 229.8	1 556.4	2 680.0	486.9	823.7	231.9	418.7	225.3	9 652.6
December Quarter	3 184.6	1 623.6	2 563.3	526.8	869.5	351.8	300.8	218.8	9 639.2
2005									
March Quarter	3 193.0	1 674.5	2 288.1	511.8	811.4	432.6	223.0	206.8	9 341.2
June Quarter	2 978.2	1 554.3	2 395.3	472.1	756.3	289.1	296.3	206.0	8 947.5
September Quarter	3 241.7	1 619.9	2 739.5	506.3	872.7	247.9	384.8	240.3	9 853.1
December Quarter	3 239.8	1 670.7	2 602.3	522.3	906.2	342.7	281.9	205.8	9 771.8
Year ended December 2004	12 405.5	6 134.1	9 686.6	1 972.1	3 210.9	1 263.5	1 273.2	881.7	36 827.5
Year ended December 2005	12 652.7	6 519.3	10 025.1	2 012.6	3 346.5	1 312.3	1 186.0	859.0	37 913.6

<i>Period</i>	<i>New South Wales</i>	<i>Victoria</i>	<i>Queensland</i>	<i>South Australia</i>	<i>Western Australia</i>	<i>Tasmania</i>	<i>Northern Territory</i>	<i>Australian Capital Territory</i>	<i>Australia</i>
AVERAGE LENGTH OF STAY (<i>days</i>)									
2004									
September Quarter	2.0	2.1	2.8	2.0	2.4	1.9	1.9	2.4	2.3
December Quarter	2.1	2.1	2.7	2.0	2.4	1.8	1.9	2.2	2.3
2005									
March Quarter	2.1	2.2	2.8	2.1	2.5	1.9	2.0	2.3	2.3
June Quarter	2.0	2.1	2.6	2.0	2.4	1.9	2.1	2.4	2.2
September Quarter	2.1	2.1	2.7	2.0	2.3	1.9	2.1	2.4	2.3
December Quarter	2.1	2.1	2.7	2.1	2.4	1.9	2.0	2.5	2.3
Year ended December 2004	2.1	2.1	2.8	2.1	2.4	1.9	1.9	2.2	2.3
Year ended December 2005	2.1	2.1	2.7	2.0	2.4	1.9	2.1	2.4	2.3
TAKINGS FROM ACCOMMODATION (\$'000)									
2004									
September Quarter	485 619	251 013	439 731	62 679	126 265	25 917	57 663	36 829	1 485 716
December Quarter	507 387	258 123	427 385	71 221	134 200	40 835	39 492	34 387	1 513 029
2005									
March Quarter	533 042	291 678	386 039	70 527	129 037	48 749	30 911	35 347	1 525 330
June Quarter	455 050	249 554	378 395	63 114	129 486	34 488	46 413	38 543	1 395 043
September Quarter	527 909	273 252	475 123	67 918	143 553	29 882	60 885	39 725	1 618 246
December Quarter	550 487	289 807	461 511	74 426	151 796	44 112	39 971	38 766	1 650 876
Year ended December 2004	1 904 031	992 023	1 576 736	263 413	488 783	144 230	164 890	140 676	5 674 782
Year ended December 2005	2 066 487	1 104 292	1 701 069	275 985	553 871	157 231	178 180	152 381	6 189 496
AVERAGE TAKINGS PER ROOM NIGHT OCCUPIED (\$)									
2004									
September Quarter	130.8	129.8	119.4	103.3	111.2	104.8	127.1	116.5	122.9
December Quarter	135.1	128.9	124.5	109.8	114.2	115.1	120.7	115.7	126.1
2005									
March Quarter	139.7	136.2	123.0	110.2	114.3	117.6	116.4	120.1	128.8
June Quarter	130.5	127.7	118.4	105.3	115.7	113.8	125.9	123.3	123.0
September Quarter	137.1	135.8	125.6	107.8	118.2	112.6	133.4	122.5	129.1
December Quarter	140.9	136.3	129.8	112.1	119.1	121.2	120.6	120.8	131.6
AVERAGE TAKINGS PER ROOM NIGHT AVAILABLE (\$)									
2004									
September Quarter	82.0	77.4	86.7	57.3	67.5	45.4	96.1	82.1	78.9
December Quarter	86.1	80.0	83.7	67.4	70.0	71.3	65.9	76.9	80.4
2005									
March Quarter	91.3	90.4	76.2	66.8	69.7	85.6	53.9	79.5	81.9
June Quarter	76.3	75.9	73.4	58.9	68.3	59.4	79.5	85.4	73.5
September Quarter	85.0	81.5	90.8	62.2	75.1	49.9	101.2	86.9	83.2
December Quarter	89.4	86.9	88.0	69.0	76.2	74.7	67.2	85.8	84.9

Period	New South Wales	Victoria	Queensland	South Australia	Western Australia	Tasmania	Northern Territory	Australian Capital Territory	Australia
ESTABLISHMENTS (no.)									
2005									
March Quarter	2 060	1 289	1 529	433	486	297	112	61	6 267
June Quarter	2 060	1 292	1 535	431	484	291	112	61	6 266
September Quarter	2 062	1 279	1 535	420	483	286	107	61	6 233
December Quarter	2 046	1 266	1 524	417	487	281	106	60	6 187
ROOMS (no.)									
2005									
March Quarter	72 509	41 239	61 249	13 353	21 768	7 457	np	np	229 137
June Quarter	72 706	41 312	61 294	13 361	22 003	np	6 669	np	229 824
September Quarter	73 949	41 274	61 502	13 377	21 902	np	6 669	np	231 229
December Quarter	74 086	41 338	61 650	13 250	22 767	7 460	np	np	232 077
BED SPACES (no.)									
2005									
March Quarter	202 819	112 418	187 726	36 735	60 606	21 728	np	np	655 013
June Quarter	202 539	112 533	187 679	36 850	60 531	np	19 542	np	654 856
September Quarter	205 356	112 413	188 911	37 035	60 481	np	19 409	np	658 870
December Quarter	204 797	112 332	189 759	36 367	62 175	21 453	np	np	659 731
PERSONS EMPLOYED (no.)									
2005									
March Quarter	36 160	24 589	34 039	9 161	11 033	5 696	np	np	126 164
June Quarter	36 178	24 577	33 913	9 012	10 980	np	3 254	np	125 671
September Quarter	37 400	24 601	34 335	8 936	11 044	np	3 139	np	127 401
December Quarter	37 242	24 650	34 438	9 067	11 180	5 519	np	np	127 513
ROOM NIGHTS OCCUPIED ('000)									
2005									
March Quarter	4 089.3	2 348.3	3 346.1	698.9	1 171.3	473.3	np	np	12 695.3
June Quarter	3 735.0	2 133.6	3 416.7	650.9	1 162.5	np	376.6	np	12 129.6
September Quarter	4 108.7	2 177.3	4 034.1	681.0	1 260.1	np	460.9	np	13 341.7
December Quarter	4 159.2	2 309.0	3 779.3	719.8	1 319.6	407.6	np	np	13 351.0
ROOM OCCUPANCY RATE (%)									
2005									
March Quarter	63.7	64.2	61.0	58.3	60.1	70.5	np	np	62.2
June Quarter	57.0	57.2	61.3	53.6	58.2	np	62.6	np	58.3
September Quarter	60.4	57.5	71.3	55.4	62.6	np	75.1	np	62.8
December Quarter	61.8	61.4	66.8	59.1	63.2	59.4	np	np	63.0
GUEST NIGHTS OCCUPIED ('000)									
2005									
March Quarter	7 376.8	4 117.8	6 865.4	1 173.8	2 084.4	920.6	np	np	23 478.6
June Quarter	6 302.1	3 525.0	6 537.6	1 028.4	1 923.2	np	649.4	np	21 068.4
September Quarter	7 213.8	3 680.9	7 964.7	1 077.5	2 146.4	np	825.3	np	23 997.7
December Quarter	7 326.9	3 916.8	7 543.8	1 195.4	2 265.5	736.2	np	np	24 065.3

np not available for publication but included in totals where applicable, unless otherwise indicated

<i>Period</i>	<i>New South Wales</i>	<i>Victoria</i>	<i>Queensland</i>	<i>South Australia</i>	<i>Western Australia</i>	<i>Tasmania</i>	<i>Northern Territory</i>	<i>Australian Capital Territory</i>	<i>Australia</i>
BED OCCUPANCY RATE (%)									
2005									
March Quarter	41.3	41.4	40.8	35.6	38.4	47.1	np	np	40.3
June Quarter	34.6	34.8	38.3	30.7	35.0	np	36.9	np	35.6
September Quarter	38.2	35.7	45.8	31.7	38.6	np	46.2	np	39.6
December Quarter	39.5	38.5	43.3	35.7	39.7	37.3	np	np	40.0
GUEST ARRIVALS ('000)									
2005									
March Quarter	3 498.2	1 907.7	2 486.8	566.2	851.5	497.8	np	np	10 245.6
June Quarter	3 257.1	1 742.9	2 612.4	518.3	797.6	np	304.5	np	9 771.8
September Quarter	3 534.8	1 799.8	2 974.2	556.3	916.9	np	389.9	np	10 694.4
December Quarter	3 522.3	1 876.3	2 809.5	575.2	948.2	391.2	np	np	10 615.6
AVERAGE LENGTH OF STAY (days)									
2005									
March Quarter	2.1	2.2	2.8	2.1	2.4	1.8	np	np	2.3
June Quarter	1.9	2.0	2.5	2.0	2.4	np	2.1	np	2.2
September Quarter	2.0	2.0	2.7	1.9	2.3	np	2.1	np	2.2
December Quarter	2.1	2.1	2.7	2.1	2.4	1.9	np	np	2.3
TAKINGS FROM ACCOMMODATION (\$'000)									
2005									
March Quarter	558 403	309 966	401 886	75 160	133 445	55 198	np	np	1 600 943
June Quarter	475 787	265 097	394 601	67 090	133 909	np	47 105	np	1 460 650
September Quarter	551 410	288 095	494 354	71 808	148 325	np	61 158	np	1 687 582
December Quarter	573 305	306 610	479 205	78 971	156 788	48 640	np	np	1 722 533
AVERAGE TAKINGS PER ROOM NIGHT OCCUPIED (\$)									
2005									
March Quarter	136.6	132.0	120.1	107.5	113.9	116.6	np	np	126.1
June Quarter	127.4	124.2	115.5	103.1	115.2	np	125.1	np	120.4
September Quarter	134.2	132.3	122.5	105.5	117.7	np	132.7	np	126.5
December Quarter	137.8	132.8	126.8	109.7	118.8	119.3	np	np	129.0
AVERAGE TAKINGS PER ROOM NIGHT AVAILABLE (\$)									
2005									
March Quarter	87.0	84.7	73.3	62.6	68.4	82.3	np	np	78.4
June Quarter	72.6	71.1	70.7	55.2	67.1	np	78.3	np	70.2
September Quarter	81.1	76.1	87.4	58.4	73.7	np	99.7	np	79.4
December Quarter	85.2	81.6	84.7	64.8	75.0	70.9	np	np	81.3

np not available for publication but included in totals where applicable, unless otherwise indicated

Period	New South Wales	Victoria	Queensland	South Australia	Western Australia	Tasmania	Northern Territory	Australian Capital Territory	Australia
ESTABLISHMENTS (no.)									
2003									
March Quarter	466	361	270	138	173	42	47	3	1 500
June Quarter	481	375	285	141	175	48	50	3	1 558
September Quarter	481	382	280	141	179	47	51	3	1 564
December Quarter	478	381	279	141	179	47	51	3	1 559
2005									
March Quarter	466	369	269	140	181	46	49	3	1 523
June Quarter	463	367	268	141	184	45	50	3	1 521
September Quarter	460	364	265	138	180	45	49	3	1 504
December Quarter	455	366	263	137	178	45	48	3	1 495
ON-SITE VANS (no.)									
2003									
March Quarter	6 128	2 565	2 462	526	1 307	np	105	np	13 394
June Quarter	6 724	2 637	2 462	541	1 328	260	np	np	14 102
September Quarter	6 652	2 564	2 299	498	1 251	258	np	np	13 689
December Quarter	6 692	2 685	2 349	496	1 218	279	np	np	13 868
2005									
March Quarter	6 604	3 005	2 146	456	1 271	np	np	np	13 942
June Quarter	6 513	3 059	1 861	387	1 323	np	np	np	13 563
September Quarter	6 952	2 971	1 934	431	1 361	np	np	np	14 055
December Quarter	6 806	3 012	1 784	454	1 452	np	89	np	13 930
OTHER POWERED SITES (no.)									
2003									
March Quarter	43 343	33 403	19 162	11 706	14 872	np	4 172	np	129 564
June Quarter	42 749	33 469	19 579	11 689	14 855	2 853	np	np	129 907
September Quarter	42 539	33 981	19 194	11 761	15 430	2 852	np	np	130 478
December Quarter	42 722	33 855	19 144	11 762	15 428	2 895	np	np	130 564
2005									
March Quarter	42 479	33 998	19 617	12 190	15 615	np	np	np	131 200
June Quarter	42 114	33 628	19 669	12 307	15 981	np	np	np	131 162
September Quarter	41 170	32 609	19 522	12 142	15 557	np	np	np	128 427
December Quarter	41 495	33 034	19 300	11 981	15 281	np	4 286	np	128 398
UNPOWERED SITES (no.)									
2003									
March Quarter	12 463	8 276	5 810	4 532	3 202	np	2 600	np	38 530
June Quarter	12 296	8 486	6 121	4 376	3 226	1 454	np	np	39 129
September Quarter	11 998	9 248	6 079	4 412	3 333	1 462	np	np	39 693
December Quarter	12 316	8 659	5 967	4 347	3 595	1 235	np	np	39 406
2005									
March Quarter	11 797	9 607	5 852	4 364	3 447	np	np	np	39 731
June Quarter	11 692	9 492	5 810	4 419	3 366	np	np	np	39 574
September Quarter	11 246	9 615	5 866	4 185	3 352	np	np	np	38 974
December Quarter	11 373	9 615	5 727	4 452	3 367	np	2 669	np	39 231

np not available for publication but included in totals where applicable, unless otherwise indicated

(a) Comprising establishments with 40 or more powered sites and cabins, flats, units and villas.

(b) Break in time series between the March and June quarters 2003. See Explanatory Notes.

<i>Period</i>	<i>New South Wales</i>	<i>Victoria</i>	<i>Queensland</i>	<i>South Australia</i>	<i>Western Australia</i>	<i>Tasmania</i>	<i>Northern Territory</i>	<i>Australian Capital Territory</i>	<i>Australia</i>
CABINS, FLATS, UNITS AND VILLAS (no.)									
2003									
March Quarter	8 878	4 166	3 846	2 123	2 025	np	851	np	22 573
June Quarter	9 079	4 371	3 937	2 239	2 133	649	np	np	23 410
September Quarter	9 230	4 564	3 994	2 206	2 126	593	np	np	23 743
December Quarter	9 443	4 910	4 116	2 186	2 253	637	np	np	24 547
2005									
March Quarter	9 569	4 703	3 909	2 286	2 674	np	np	np	24 791
June Quarter	9 666	4 695	4 059	2 340	2 727	np	np	np	25 160
September Quarter	9 779	4 813	3 955	2 278	2 520	np	np	np	25 005
December Quarter	9 739	5 043	3 983	2 240	2 489	np	949	np	25 191
TOTAL CAPACITY (no.)									
2003									
March Quarter	70 812	48 410	31 280	18 887	21 406	np	7 728	np	204 061
June Quarter	70 848	48 963	32 099	18 845	21 542	5 216	np	np	206 548
September Quarter	70 419	50 357	31 566	18 877	22 140	5 165	np	np	207 603
December Quarter	71 173	50 109	31 576	18 791	22 494	5 046	np	np	208 385
2005									
March Quarter	70 449	51 313	31 524	19 296	23 007	np	np	np	209 664
June Quarter	69 985	50 874	31 399	19 453	23 397	np	np	np	209 459
September Quarter	69 147	50 008	31 277	19 036	22 790	np	np	np	206 461
December Quarter	69 413	50 704	30 794	19 127	22 589	np	7 993	np	206 750
PERSONS EMPLOYED (no.)									
2003									
March Quarter	2 728	1 667	1 260	699	965	np	382	np	8 043
June Quarter	2 697	1 671	1 375	695	982	242	np	np	8 215
September Quarter	2 713	1 551	1 395	725	1 056	245	np	np	8 259
December Quarter	2 961	1 743	1 405	717	1 044	268	np	np	8 621
2005									
March Quarter	2 925	1 765	1 402	780	1 073	np	np	np	8 731
June Quarter	2 783	1 685	1 459	761	1 130	np	np	np	8 683
September Quarter	2 755	1 606	1 413	768	1 112	np	np	np	8 493
December Quarter	2 929	1 757	1 372	742	1 085	np	464	np	8 689
SITES OCCUPIED BY LONG-TERM GUESTS (no.)									
2003									
March Quarter	6 453	3 404	4 948	1 093	2 330	np	507	np	19 151
June Quarter	6 466	3 352	5 437	1 097	2 510	374	np	np	19 961
September Quarter	6 003	3 060	5 106	1 044	2 678	332	np	np	18 923
December Quarter	6 442	3 287	4 753	1 096	2 524	327	np	np	19 052
2005									
March Quarter	6 332	3 519	4 622	1 039	2 538	np	np	np	19 192
June Quarter	6 608	3 044	4 904	1 143	2 709	np	np	np	19 482
September Quarter	6 457	3 012	5 061	963	2 875	np	np	np	19 408
December Quarter	6 467	3 111	4 744	1 023	2 710	np	500	np	19 038

np not available for publication but included in totals where applicable, unless otherwise indicated

(a) Comprising establishments with 40 or more powered sites and cabins, flats, units and villas.

(b) Break in time series between the March and June quarters 2003. See Explanatory Notes.

Period	New South Wales	Victoria	Queensland	South Australia	Western Australia	Tasmania	Northern Territory	Australian Capital Territory	Australia
OTHER SITES PERMANENTLY RESERVED (no.)									
2003									
March Quarter	20 132	14 881	1 343	2 144	2 352	np	23	np	41 841
June Quarter	19 411	13 986	1 275	2 079	2 309	1 019	np	np	40 099
September Quarter	19 047	14 746	1 305	2 245	2 385	1 028	np	np	40 779
December Quarter	19 129	14 661	1 394	2 242	2 429	1 031	np	np	40 947
2005									
March Quarter	19 794	14 999	1 203	2 213	2 097	np	np	np	41 175
June Quarter	20 069	14 686	1 226	2 312	2 127	np	np	np	41 283
September Quarter	19 937	14 979	1 138	2 385	1 989	np	np	np	41 358
December Quarter	19 808	15 190	1 119	2 354	1 967	np	50	np	41 405
SITE NIGHTS OCCUPIED ('000)									
2003									
March Quarter	3 634.6	2 362.1	1 039.1	692.3	801.6	np	95.6	np	8 869.7
June Quarter	3 337.4	2 141.8	1 431.6	621.4	913.6	184.4	np	np	8 917.4
September Quarter	3 295.2	2 017.8	1 760.9	565.8	1 062.1	161.4	np	np	9 247.7
December Quarter	3 547.0	2 209.3	1 189.4	655.6	840.7	218.0	np	np	8 836.9
2005									
March Quarter	3 680.0	2 476.6	1 139.2	743.1	869.2	np	np	np	9 259.1
June Quarter	3 388.7	2 065.6	1 363.1	638.6	920.1	np	np	np	8 832.6
September Quarter	3 322.4	2 010.3	1 740.5	565.1	1 032.8	np	np	np	9 208.7
December Quarter	3 482.0	2 205.4	1 201.1	655.6	875.6	np	160.3	np	8 790.0
SITE OCCUPANCY RATE (%)									
2003									
March Quarter	57.1	55.0	37.2	40.7	42.0	np	13.9	np	48.6
June Quarter	51.8	49.1	49.0	36.2	46.7	39.6	np	np	47.7
September Quarter	51.0	45.9	60.6	32.6	52.4	34.7	np	np	49.1
December Quarter	54.2	48.7	41.0	37.9	40.6	47.0	np	np	46.3
2005									
March Quarter	58.1	53.7	40.3	42.8	42.3	np	np	np	49.2
June Quarter	53.2	45.7	47.7	36.1	43.3	np	np	np	46.6
September Quarter	52.3	45.7	60.5	32.4	49.3	np	np	np	49.1
December Quarter	54.5	48.1	42.4	37.3	42.3	np	22.0	np	46.5
TAKINGS FROM ACCOMMODATION (\$'000)									
2003									
March Quarter	63 962	31 177	20 372	14 234	15 307	np	2 709	np	152 854
June Quarter	49 636	24 369	28 202	11 605	17 489	2 899	np	np	142 309
September Quarter	49 594	23 364	37 976	10 301	21 769	1 968	np	np	155 353
December Quarter	65 331	30 560	26 269	12 927	17 662	3 983	np	np	161 459
2005									
March Quarter	75 460	36 701	25 576	16 331	19 731	np	np	np	183 107
June Quarter	52 686	24 687	31 275	12 519	20 196	np	np	np	154 516
September Quarter	52 572	25 015	42 250	11 168	23 678	np	np	np	169 549
December Quarter	68 601	32 574	29 151	14 123	21 490	np	4 896	np	175 370

np not available for publication but included in totals where applicable, unless otherwise indicated

(a) Comprising establishments with 40 or more powered sites and cabins, flats, units and villas.

(b) Break in time series between the March and June quarters 2003. See Explanatory Notes.

Period	New South Wales	Victoria	Queensland	South Australia	Western Australia	Tasmania	Northern Territory	Australian Capital Territory	Australia
ESTABLISHMENTS (no.)									
2003									
March Quarter	93	57	85	11	34	2	5	1	288
June Quarter	92	57	85	11	33	—	4	1	283
September Quarter	89	51	83	11	28	—	4	1	267
December Quarter	89	51	82	11	28	—	4	1	266
2005									
March Quarter	82	47	78	9	25	1	4	1	247
June Quarter	82	47	78	9	25	1	4	1	247
September Quarter	79	46	76	9	25	1	4	—	240
December Quarter	79	46	75	9	25	1	4	—	239
ON-SITE VANS (no.)									
2003									
March Quarter	1 905	687	2 393	141	418	np	51	np	5 705
June Quarter	1 904	618	2 319	115	381	—	np	np	5 456
September Quarter	1 867	500	2 337	131	296	—	np	np	5 250
December Quarter	1 798	563	2 204	138	257	—	np	np	5 075
2005									
March Quarter	1 420	497	2 277	156	345	np	np	np	4 814
June Quarter	1 492	504	2 236	159	348	np	np	np	4 858
September Quarter	1 347	461	2 035	165	347	np	np	—	4 372
December Quarter	1 210	463	1 987	157	340	np	np	—	4 173
OTHER POWERED SITES (no.)									
2003									
March Quarter	6 684	4 911	6 018	1 034	2 889	np	216	np	22 038
June Quarter	6 529	4 778	6 066	1 044	2 917	—	np	np	21 527
September Quarter	6 168	4 181	5 849	1 052	2 394	—	np	np	19 855
December Quarter	6 413	4 078	5 764	1 043	2 499	—	np	np	19 985
2005									
March Quarter	6 543	3 833	4 942	815	2 096	np	np	np	18 582
June Quarter	6 409	3 799	5 066	815	2 118	np	np	np	18 561
September Quarter	6 058	3 784	5 074	814	2 131	np	np	—	18 224
December Quarter	6 138	3 791	4 936	814	2 067	np	np	—	18 117
UNPOWERED SITES (no.)									
2003									
March Quarter	1 004	605	447	92	221	np	84	np	2 501
June Quarter	905	626	433	80	292	—	np	np	2 410
September Quarter	894	478	422	76	267	—	np	np	2 211
December Quarter	1 014	557	446	74	242	—	np	np	2 407
2005									
March Quarter	814	421	458	106	195	np	np	np	2 075
June Quarter	834	402	450	105	164	np	np	np	2 036
September Quarter	844	360	461	121	202	np	np	—	2 256
December Quarter	855	352	465	121	205	np	np	—	2 079

— nil or rounded to zero (including null cells)
 np not available for publication but included in totals where applicable, unless otherwise indicated

(a) Comprising establishments with 40 or more powered sites and cabins, flats, units and villas.
 (b) Break in time series between the March and June quarters 2003. See Explanatory Notes.

<i>Period</i>	<i>New South Wales</i>	<i>Victoria</i>	<i>Queensland</i>	<i>South Australia</i>	<i>Western Australia</i>	<i>Tasmania</i>	<i>Northern Territory</i>	<i>Australian Capital Territory</i>	<i>Australia</i>
CABINS, FLATS, UNITS AND VILLAS (no.)									
2003									
March Quarter	2 367	1 415	1 284	199	530	np	40	np	5 853
June Quarter	2 245	1 493	1 406	199	509	—	np	np	5 882
September Quarter	2 278	1 438	1 484	200	562	—	np	np	5 992
December Quarter	2 461	1 480	1 587	202	566	—	np	np	6 326
2005									
March Quarter	2 181	1 429	1 699	221	572	np	np	np	6 146
June Quarter	2 223	1 446	1 719	220	573	np	np	np	6 226
September Quarter	2 137	1 279	1 717	221	602	np	np	—	6 005
December Quarter	2 172	1 381	1 703	232	673	np	np	—	6 209
TOTAL CAPACITY (no.)									
2003									
March Quarter	11 960	7 618	10 142	1 466	4 058	np	391	np	36 097
June Quarter	11 583	7 515	10 224	1 438	4 099	—	np	np	35 275
September Quarter	11 207	6 597	10 092	1 459	3 519	—	np	np	33 308
December Quarter	11 686	6 678	10 001	1 457	3 564	—	np	np	33 793
2005									
March Quarter	10 958	6 180	9 376	1 298	3 208	np	np	np	31 617
June Quarter	10 958	6 151	9 471	1 299	3 203	np	np	np	31 681
September Quarter	10 386	5 884	9 287	1 321	3 282	np	np	—	30 857
December Quarter	10 375	5 987	9 091	1 324	3 285	np	np	—	30 578
PERSONS EMPLOYED (no.)									
2003									
March Quarter	500	288	441	68	171	np	33	np	1 510
June Quarter	495	286	440	60	174	—	np	np	1 482
September Quarter	491	233	453	71	157	—	np	np	1 430
December Quarter	501	243	470	69	142	—	np	np	1 456
2005									
March Quarter	452	237	438	40	144	np	np	np	1 334
June Quarter	456	239	476	46	141	np	np	np	1 381
September Quarter	426	232	442	43	137	np	np	—	1 300
December Quarter	446	231	434	53	142	np	np	—	1 327
SITES OCCUPIED BY LONG-TERM GUESTS (no.)									
2003									
March Quarter	7 229	4 511	7 049	1 010	2 588	np	206	np	22 885
June Quarter	6 579	3 986	6 955	987	2 130	—	np	np	20 885
September Quarter	6 641	3 677	6 870	1 007	1 982	—	np	np	20 441
December Quarter	6 401	3 660	6 743	973	1 853	—	np	np	19 889
2005									
March Quarter	5 811	3 536	6 331	726	1 872	np	np	np	18 528
June Quarter	5 869	3 327	6 189	777	1 953	np	np	np	18 362
September Quarter	5 540	3 260	6 280	839	1 988	np	np	—	18 051
December Quarter	5 532	3 255	6 034	733	1 975	np	np	—	17 687

— nil or rounded to zero (including null cells)

np not available for publication but included in totals where applicable, unless otherwise indicated

(a) Comprising establishments with 40 or more powered sites and cabins, flats, units and villas.

(b) Break in time series between the March and June quarters 2003. See Explanatory Notes.

Period	New South Wales	Victoria	Queensland	South Australia	Western Australia	Tasmania	Northern Territory	Australian Capital Territory	Australia
OTHER SITES PERMANENTLY RESERVED (no.)									
2003									
March Quarter	679	411	174	5	54	np	—	np	1 323
June Quarter	723	572	122	2	127	—	np	np	1 546
September Quarter	788	349	79	3	113	—	np	np	1 332
December Quarter	966	354	204	4	74	—	np	np	1 602
2005									
March Quarter	1 002	338	118	—	28	np	np	np	1 560
June Quarter	1 018	386	126	—	33	np	np	np	1 649
September Quarter	892	404	153	5	39	np	np	—	1 560
December Quarter	906	344	150	—	19	np	np	—	1 498
SITE NIGHTS OCCUPIED ('000)									
2003									
March Quarter	818.3	527.6	719.4	101.9	269.9	np	21.3	np	2 495.3
June Quarter	754.7	475.4	727.1	98.2	245.6	—	np	np	2 326.8
September Quarter	769.3	416.0	752.7	102.3	235.9	—	np	np	2 309.4
December Quarter	793.8	446.4	738.9	107.1	240.6	—	np	np	2 354.4
2005									
March Quarter	730.6	423.8	688.1	81.0	211.7	np	np	np	2 175.0
June Quarter	727.2	384.7	700.1	81.4	218.5	np	np	np	2 155.9
September Quarter	690.5	373.2	711.4	93.3	229.1	np	np	—	2 130.0
December Quarter	701.6	379.2	672.5	82.0	228.3	np	np	—	2 088.9
SITE OCCUPANCY RATE (%)									
2003									
March Quarter	76.4	77.0	78.8	77.2	73.9	np	60.6	np	76.9
June Quarter	71.6	69.5	78.1	75.1	65.8	—	np	np	72.5
September Quarter	74.6	68.5	81.1	76.2	72.9	—	np	np	75.4
December Quarter	73.8	72.7	80.3	79.9	73.4	—	np	np	75.7
2005									
March Quarter	74.1	76.2	81.5	69.3	73.3	np	np	np	76.4
June Quarter	72.9	68.7	81.2	68.9	75.0	np	np	np	74.8
September Quarter	72.3	69.0	83.3	76.7	75.9	np	np	—	75.0
December Quarter	73.5	69.5	80.4	67.3	75.5	np	np	—	74.4
TAKINGS FROM ACCOMMODATION (\$'000)									
2003									
March Quarter	13 169	7 001	10 118	1 266	4 056	np	278	np	36 145
June Quarter	11 471	6 312	10 509	1 103	3 951	—	np	np	33 638
September Quarter	11 765	6 256	11 379	1 322	4 259	—	np	np	35 362
December Quarter	12 661	6 879	11 580	1 395	4 250	—	np	np	37 097
2005									
March Quarter	12 623	6 105	11 813	1 349	3 605	np	np	np	35 978
June Quarter	11 263	5 424	11 986	1 291	3 597	np	np	np	34 001
September Quarter	11 649	6 134	12 998	1 497	4 069	np	np	—	36 766
December Quarter	12 793	6 406	12 688	1 349	4 206	np	np	—	37 799

— nil or rounded to zero (including null cells)

np not available for publication but included in totals where applicable, unless otherwise indicated

(a) Comprising establishments with 40 or more powered sites and cabins, flats, units and villas.

(b) Break in time series between the March and June quarters 2003. See Explanatory Notes.

Period	New South Wales	Victoria	Queensland	South Australia	Western Australia	Tasmania	Northern Territory	Australian Capital Territory	Australia
ESTABLISHMENTS (no.)									
2003									
March Quarter	559	418	355	149	207	44	52	4	1 788
June Quarter	573	432	370	152	208	48	54	4	1 841
September Quarter	570	433	363	152	207	47	55	4	1 831
December Quarter	567	432	361	152	207	47	55	4	1 825
2005									
March Quarter	548	416	347	149	206	47	53	4	1 770
June Quarter	545	414	346	150	209	46	54	4	1 768
September Quarter	539	410	341	147	205	46	53	3	1 744
December Quarter	534	412	338	146	203	46	52	3	1 734
ON-SITE VANS (no.)									
2003									
March Quarter	8 033	3 252	4 855	667	1 725	251	156	160	19 099
June Quarter	8 628	3 255	4 781	656	1 709	260	112	157	19 558
September Quarter	8 519	3 064	4 636	629	1 547	258	126	160	18 939
December Quarter	8 490	3 248	4 553	634	1 475	279	104	160	18 943
2005									
March Quarter	8 024	3 502	4 423	612	1 616	270	149	160	18 756
June Quarter	8 005	3 563	4 097	546	1 671	240	139	160	18 421
September Quarter	8 299	3 432	3 969	596	1 708	np	98	np	18 427
December Quarter	8 016	3 475	3 771	611	1 792	np	np	np	18 103
OTHER POWERED SITES (no.)									
2003									
March Quarter	50 027	38 314	25 180	12 740	17 761	2 819	4 388	373	151 602
June Quarter	49 278	38 247	25 645	12 733	17 772	2 853	4 533	373	151 434
September Quarter	48 707	38 162	25 043	12 813	17 824	2 852	4 559	373	150 333
December Quarter	49 135	37 933	24 908	12 805	17 927	2 895	4 573	373	150 549
2005									
March Quarter	49 022	37 831	24 559	13 005	17 711	2 849	4 429	376	149 782
June Quarter	48 523	37 427	24 735	13 122	18 099	2 858	4 586	373	149 723
September Quarter	47 228	36 393	24 596	12 956	17 688	np	4 585	np	146 651
December Quarter	47 633	36 825	24 236	12 795	17 348	np	np	np	146 515
UNPOWERED SITES (no.)									
2003									
March Quarter	13 467	8 881	6 257	4 624	3 423	1 295	2 684	400	41 031
June Quarter	13 201	9 112	6 554	4 456	3 518	1 454	2 844	400	41 539
September Quarter	12 892	9 726	6 501	4 488	3 600	1 462	2 829	406	41 904
December Quarter	13 330	9 216	6 413	4 421	3 837	1 235	2 961	400	41 813
2005									
March Quarter	12 611	10 028	6 310	4 470	3 642	1 674	2 671	400	41 806
June Quarter	12 526	9 894	6 260	4 524	3 530	1 621	2 855	400	41 610
September Quarter	12 090	9 975	6 327	4 306	3 554	np	2 960	np	41 230
December Quarter	12 228	9 967	6 192	4 573	3 572	np	np	np	41 310

np not available for publication but included in totals where applicable, unless otherwise indicated

(a) Comprising establishments with 40 or more powered sites and cabins, flats, units and villas.

(b) Break in time series between the March and June quarters 2003. See Explanatory Notes.

<i>Period</i>	<i>New South Wales</i>	<i>Victoria</i>	<i>Queensland</i>	<i>South Australia</i>	<i>Western Australia</i>	<i>Tasmania</i>	<i>Northern Territory</i>	<i>Australian Capital Territory</i>	<i>Australia</i>
CABINS, FLATS, UNITS AND VILLAS (no.)									
2003									
March Quarter	11 245	5 581	5 130	2 322	2 555	608	891	94	28 426
June Quarter	11 324	5 864	5 343	2 438	2 642	649	938	94	29 292
September Quarter	11 508	6 002	5 478	2 406	2 688	593	966	94	29 735
December Quarter	11 904	6 390	5 703	2 388	2 819	637	938	94	30 873
2005									
March Quarter	11 750	6 132	5 608	2 507	3 246	638	960	96	30 937
June Quarter	11 889	6 141	5 778	2 560	3 300	645	977	96	31 386
September Quarter	11 916	6 092	5 672	2 499	3 122	np	960	np	31 010
December Quarter	11 911	6 424	5 686	2 472	3 162	np	np	np	31 400
TOTAL CAPACITY (no.)									
2003									
March Quarter	82 772	56 028	41 422	20 353	25 464	4 973	8 119	1 027	240 158
June Quarter	82 431	56 478	42 323	20 283	25 641	5 216	8 427	1 024	241 823
September Quarter	81 626	56 954	41 658	20 336	25 659	5 165	8 480	1 033	240 911
December Quarter	82 859	56 787	41 577	20 248	26 058	5 046	8 576	1 027	242 178
2005									
March Quarter	81 407	57 493	40 900	20 594	26 215	5 431	8 209	1 032	241 281
June Quarter	80 943	57 025	40 870	20 752	26 600	5 364	8 557	1 029	241 140
September Quarter	79 533	55 892	40 564	20 357	26 072	np	8 603	np	237 318
December Quarter	79 788	56 691	39 885	20 451	25 874	np	np	np	237 328
PERSONS EMPLOYED (no.)									
2003									
March Quarter	3 228	1 955	1 701	767	1 136	278	415	73	9 553
June Quarter	3 192	1 957	1 815	755	1 156	242	498	82	9 697
September Quarter	3 204	1 784	1 848	796	1 213	245	514	85	9 689
December Quarter	3 462	1 986	1 875	786	1 186	268	428	86	10 077
2005									
March Quarter	3 377	2 002	1 840	820	1 217	268	475	66	10 065
June Quarter	3 239	1 924	1 935	807	1 271	242	559	87	10 064
September Quarter	3 181	1 838	1 855	811	1 249	np	520	np	9 793
December Quarter	3 375	1 988	1 806	795	1 227	np	np	np	10 016
SITES OCCUPIED BY LONG-TERM GUESTS (no.)									
2003									
March Quarter	13 682	7 915	11 997	2 103	4 918	455	713	253	42 036
June Quarter	13 045	7 338	12 392	2 084	4 640	374	719	254	40 846
September Quarter	12 644	6 737	11 976	2 051	4 660	332	717	247	39 364
December Quarter	12 843	6 947	11 496	2 069	4 377	327	634	248	38 941
2005									
March Quarter	12 143	7 055	10 953	1 765	4 410	466	681	247	37 720
June Quarter	12 477	6 371	11 093	1 920	4 662	364	710	247	37 844
September Quarter	11 997	6 272	11 341	1 802	4 863	np	701	np	37 459
December Quarter	11 999	6 366	10 778	1 756	4 685	np	np	np	36 725

np not available for publication but included in totals where applicable, unless otherwise indicated

(a) Comprising establishments with 40 or more powered sites and cabins, flats, units and villas.

(b) Break in time series between the March and June quarters 2003. See Explanatory Notes.

Period	New South Wales	Victoria	Queensland	South Australia	Western Australia	Tasmania	Northern Territory	Australian Capital Territory	Australia
OTHER SITES PERMANENTLY RESERVED (no.)									
2003									
March Quarter	20 811	15 292	1 517	2 149	2 406	959	23	7	43 164
June Quarter	20 134	14 558	1 397	2 081	2 436	1 019	14	6	41 645
September Quarter	19 835	15 095	1 384	2 248	2 498	1 028	18	5	42 111
December Quarter	20 095	15 015	1 598	2 246	2 503	1 031	55	6	42 549
2005									
March Quarter	20 796	15 337	1 321	2 213	2 125	920	18	5	42 735
June Quarter	21 087	15 072	1 352	2 312	2 160	943	1	5	42 932
September Quarter	20 829	15 383	1 291	2 390	2 028	np	22	np	42 918
December Quarter	20 714	15 534	1 269	2 354	1 986	np	np	np	42 903
SITE NIGHTS OCCUPIED ('000)									
2003									
March Quarter	4 452.9	2 889.7	1 758.6	794.2	1 071.6	246.1	116.9	35.1	11 365.0
June Quarter	4 092.1	2 617.2	2 158.6	719.6	1 159.1	184.4	278.1	35.0	11 244.2
September Quarter	4 064.5	2 433.8	2 513.6	668.0	1 297.9	161.4	383.4	34.4	11 557.1
December Quarter	4 340.8	2 655.7	1 928.3	762.7	1 081.2	218.0	167.2	37.4	11 191.3
2005									
March Quarter	4 410.6	2 900.4	1 827.3	824.1	1 080.9	248.6	107.1	35.2	11 434.1
June Quarter	4 115.9	2 450.2	2 063.2	720.0	1 138.6	172.1	296.7	31.8	10 988.6
September Quarter	4 012.8	2 383.6	2 451.9	658.4	1 262.0	np	402.0	np	11 338.7
December Quarter	4 183.6	2 584.5	1 873.6	737.6	1 103.9	np	np	np	10 878.9
SITE OCCUPANCY RATE (%)									
2003									
March Quarter	59.9	58.0	47.5	43.4	47.1	55.0	16.2	37.9	52.9
June Quarter	54.6	51.9	56.0	39.0	49.8	39.6	36.3	37.6	51.4
September Quarter	54.2	48.6	65.6	35.7	55.3	34.7	49.1	36.2	52.8
December Quarter	56.9	51.6	50.4	40.9	45.1	47.0	21.2	39.6	50.4
2005									
March Quarter	60.2	56.1	49.8	44.5	46.2	51.5	14.8	37.8	52.8
June Quarter	55.9	48.2	55.5	38.1	47.1	35.9	38.1	34.0	50.4
September Quarter	54.9	48.3	65.7	35.3	52.6	np	50.8	np	52.5
December Quarter	57.0	50.4	51.1	39.3	46.6	np	np	np	50.1
TAKINGS FROM ACCOMMODATION (\$'000)									
2003									
March Quarter	77 130	38 178	30 490	15 500	19 362	4 600	2 987	752	189 000
June Quarter	61 106	30 682	38 712	12 708	21 440	2 899	7 685	716	175 947
September Quarter	61 359	29 620	49 355	11 623	26 028	1 968	9 919	843	190 715
December Quarter	77 992	37 439	37 849	14 323	21 911	3 983	4 098	961	198 556
2005									
March Quarter	88 084	42 806	37 389	17 679	23 336	5 645	3 298	848	219 085
June Quarter	63 948	30 111	43 260	13 810	23 793	3 355	9 537	701	188 516
September Quarter	64 221	31 149	55 248	12 665	27 746	np	12 286	np	206 315
December Quarter	81 394	38 980	41 839	15 472	25 696	np	np	np	213 168

np not available for publication but included in totals where applicable, unless otherwise indicated

(a) Comprising establishments with 40 or more powered sites and cabins, flats, units and villas.

(b) Break in time series between the March and June quarters 2003. See Explanatory Notes.

Period	New South Wales	Victoria	Queensland	South Australia	Western Australia	Tasmania	Northern Territory	Australian Capital Territory	Australia
--------	-----------------	----------	------------	-----------------	-------------------	----------	--------------------	------------------------------	-----------

LETTING ENTITIES (a) (no.)

2003									
March Quarter	104	13	47	8	2	2	—	—	176
June Quarter	104	13	47	8	2	2	—	—	176
September Quarter	101	13	46	8	2	1	—	—	171
December Quarter	101	13	46	8	2	1	—	—	171
2005									
March Quarter	95	15	43	8	2	1	—	—	164
June Quarter	95	16	44	8	2	1	—	—	166
September Quarter	98	17	44	8	2	1	—	—	170
December Quarter	97	17	43	8	2	1	—	—	168

SINGLE BEDROOM HOLIDAY FLATS, UNITS AND HOUSES (no.)

2003									
March Quarter	460	95	195	11	np	np	—	—	768
June Quarter	475	98	222	11	np	np	—	—	813
September Quarter	411	np	193	14	np	np	—	—	638
December Quarter	435	13	203	np	np	np	—	—	667
2005									
March Quarter	387	69	164	np	np	np	—	—	638
June Quarter	403	46	173	np	np	np	—	—	640
September Quarter	406	32	153	np	np	np	—	—	606
December Quarter	393	37	159	np	np	np	—	—	603

MULTIPLE BEDROOM HOLIDAY FLATS, UNITS AND HOUSES (no.)

2003									
March Quarter	7 271	1 208	3 152	604	np	np	—	—	12 349
June Quarter	7 430	936	3 029	620	np	np	—	—	12 130
September Quarter	7 423	np	3 015	634	np	np	—	—	12 074
December Quarter	7 671	1 124	3 061	np	np	np	—	—	12 622
2005									
March Quarter	7 578	1 604	2 847	np	np	np	—	—	12 945
June Quarter	7 554	1 440	2 924	np	np	np	—	—	12 833
September Quarter	7 559	1 643	3 029	np	np	np	—	—	13 123
December Quarter	7 581	1 790	3 081	np	np	np	—	—	13 354

TOTAL HOLIDAY FLATS, UNITS AND HOUSES (no.)

2003									
March Quarter	7 731	1 303	3 347	615	np	np	—	—	13 117
June Quarter	7 905	1 034	3 251	631	np	np	—	—	12 943
September Quarter	7 834	np	3 208	648	np	np	—	—	12 712
December Quarter	8 106	1 137	3 264	np	np	np	—	—	13 289
2005									
March Quarter	7 965	1 673	3 011	np	np	np	—	—	13 583
June Quarter	7 957	1 486	3 097	np	np	np	—	—	13 473
September Quarter	7 965	1 675	3 182	np	np	np	—	—	13 729
December Quarter	7 974	1 827	3 240	np	np	np	—	—	13 957

— nil or rounded to zero (including null cells)

np not available for publication but included in totals where applicable, unless otherwise indicated

(a) The number of owners, managers or real estate agents with 15 or more self-contained units.

<i>Period</i>	<i>New South Wales</i>	<i>Victoria</i>	<i>Queensland</i>	<i>South Australia</i>	<i>Western Australia</i>	<i>Tasmania</i>	<i>Northern Territory</i>	<i>Australian Capital Territory</i>	<i>Australia</i>
BED SPACES (no.)									
2003									
March Quarter	41 325	6 535	16 830	3 454	np	np	—	—	68 917
June Quarter	42 690	6 052	16 548	3 707	np	np	—	—	69 785
September Quarter	43 327	np	17 069	3 697	np	np	—	—	70 775
December Quarter	44 819	6 992	16 745	np	np	np	—	—	73 234
2005									
March Quarter	40 019	11 452	14 793	np	np	np	—	—	71 934
June Quarter	39 703	10 674	14 244	np	np	np	—	—	70 274
September Quarter	42 309	11 864	14 843	np	np	np	—	—	74 671
December Quarter	42 387	12 487	14 955	np	np	np	—	—	75 846
UNIT NIGHTS OCCUPIED ('000)									
2003									
March Quarter	285.0	47.5	155.5	17.9	np	np	—	—	510.4
June Quarter	201.2	5.6	129.2	12.2	np	np	—	—	352.3
September Quarter	212.8	np	164.4	7.9	np	np	—	—	395.4
December Quarter	293.1	7.5	163.7	np	np	np	—	—	488.6
2005									
March Quarter	291.5	49.0	137.1	np	np	np	—	—	510.5
June Quarter	183.4	11.7	108.0	np	np	np	—	—	321.7
September Quarter	201.3	10.4	164.3	np	np	np	—	—	392.0
December Quarter	248.7	11.9	159.1	np	np	np	—	—	437.7
UNIT OCCUPANCY RATE (%)									
2003									
March Quarter	41.0	40.5	51.6	32.3	np	np	—	—	43.2
June Quarter	28.0	6.0	43.7	21.8	np	np	—	—	29.9
September Quarter	29.5	np	56.1	13.3	np	np	—	—	34.0
December Quarter	39.4	7.2	54.5	np	np	np	—	—	40.0
2005									
March Quarter	40.7	32.5	50.6	np	np	np	—	—	41.8
June Quarter	25.3	8.7	38.3	np	np	np	—	—	26.2
September Quarter	27.5	6.7	56.1	np	np	np	—	—	31.0
December Quarter	33.9	7.1	53.4	np	np	np	—	—	34.1
UNIT LETTINGS ('000)									
2003									
March Quarter	37.8	9.6	25.5	3.5	np	np	—	—	76.8
June Quarter	31.5	1.4	25.0	3.9	np	np	—	—	62.3
September Quarter	31.1	np	26.4	1.2	np	np	—	—	60.6
December Quarter	47.6	1.7	30.0	np	np	np	—	—	83.1
2005									
March Quarter	40.4	14.2	25.1	np	np	np	—	—	86.3
June Quarter	28.9	3.8	22.5	np	np	np	—	—	57.8
September Quarter	32.9	2.2	27.8	np	np	np	—	—	66.4
December Quarter	42.1	2.9	36.0	np	np	np	—	—	84.0

— nil or rounded to zero (including null cells)

np not available for publication but included in totals where applicable, unless otherwise indicated

<i>Period</i>	<i>New South Wales</i>	<i>Victoria</i>	<i>Queensland</i>	<i>South Australia</i>	<i>Western Australia</i>	<i>Tasmania</i>	<i>Northern Territory</i>	<i>Australian Capital Territory</i>	<i>Australia</i>
---------------	------------------------	-----------------	-------------------	------------------------	--------------------------	-----------------	---------------------------	-------------------------------------	------------------

AVERAGE LENGTH OF STAY (*days*)

2003									
March Quarter	7.5	5.0	6.1	5.2	np	np	—	—	6.6
June Quarter	6.4	4.0	5.2	3.1	np	np	—	—	5.7
September Quarter	6.9	np	6.2	6.5	np	np	—	—	6.5
December Quarter	6.2	4.5	5.4	np	np	np	—	—	5.9
2005									
March Quarter	7.2	3.5	5.5	np	np	np	—	—	5.9
June Quarter	6.4	3.1	4.8	np	np	np	—	—	5.6
September Quarter	6.1	4.6	5.9	np	np	np	—	—	5.9
December Quarter	5.9	4.2	4.4	np	np	np	—	—	5.2

TAKINGS FROM ACCOMMODATION (\$'000)

2003									
March Quarter	29 506	5 952	13 284	1 377	np	np	—	—	50 505
June Quarter	14 518	765	10 335	856	np	np	—	—	26 793
September Quarter	16 090	np	11 941	645	np	np	—	—	30 224
December Quarter	31 470	1 127	14 696	np	np	np	—	—	49 387
2005									
March Quarter	29 987	4 463	13 334	np	np	np	—	—	51 241
June Quarter	12 352	1 004	8 524	np	np	np	—	—	23 728
September Quarter	17 168	1 625	13 388	np	np	np	—	—	33 668
December Quarter	26 633	1 340	15 289	np	np	np	—	—	45 320

— nil or rounded to zero (including null cells)

np not available for publication but included in totals where applicable, unless otherwise indicated

Period	New South Wales	Victoria	Queensland	South Australia	Western Australia	Tasmania	Northern Territory	Australian Capital Territory	Australia
--------	-----------------	----------	------------	-----------------	-------------------	----------	--------------------	------------------------------	-----------

LETTING ENTITIES (a) (no.)

2003									
March Quarter	56	17	314	9	23	7	2	3	431
June Quarter	55	16	312	9	23	7	2	3	427
September Quarter	57	18	313	8	23	7	2	3	431
December Quarter	57	18	309	8	23	7	2	3	427
2005									
March Quarter	66	17	300	7	20	7	2	3	422
June Quarter	63	17	298	7	19	7	2	3	416
September Quarter	55	17	302	7	19	7	2	3	412
December Quarter	55	17	304	7	20	7	2	3	415

SINGLE BEDROOM HOLIDAY FLATS, UNITS AND HOUSES (no.)

2003									
March Quarter	469	240	3 009	108	np	np	np	np	4 296
June Quarter	440	229	2 744	108	np	np	np	61	3 942
September Quarter	493	np	2 770	92	np	np	np	np	4 071
December Quarter	532	288	2 955	np	np	np	np	np	4 213
2005									
March Quarter	480	232	2 799	np	np	np	np	np	3 978
June Quarter	450	244	2 751	np	np	np	np	np	3 917
September Quarter	404	254	2 945	np	np	np	np	np	4 159
December Quarter	408	253	2 912	np	np	np	np	np	4 113

MULTIPLE BEDROOM HOLIDAY FLATS, UNITS AND HOUSES (no.)

2003									
March Quarter	989	551	7 922	168	np	np	np	np	10 683
June Quarter	979	521	7 788	168	np	np	np	111	10 574
September Quarter	1 012	np	7 594	164	np	np	np	np	10 511
December Quarter	1 034	691	7 473	np	np	np	np	np	10 508
2005									
March Quarter	1 478	560	7 515	np	np	np	np	np	10 707
June Quarter	1 465	554	7 394	np	np	np	np	np	10 546
September Quarter	1 040	557	7 385	np	np	np	np	np	10 077
December Quarter	1 029	559	7 591	np	np	np	np	np	10 322

TOTAL HOLIDAY FLATS, UNITS AND HOUSES (no.)

2003									
March Quarter	1 458	791	10 931	276	np	np	np	np	14 979
June Quarter	1 419	750	10 532	276	np	np	np	172	14 516
September Quarter	1 505	np	10 364	256	np	np	np	np	14 582
December Quarter	1 566	979	10 428	np	np	np	np	np	14 721
2005									
March Quarter	1 958	792	10 314	np	np	np	np	np	14 685
June Quarter	1 915	798	10 145	np	np	np	np	np	14 463
September Quarter	1 444	811	10 330	np	np	np	np	np	14 236
December Quarter	1 437	812	10 503	np	np	np	np	np	14 435

np not available for publication but included in totals where applicable, unless otherwise indicated

(a) The number of owners, managers or real estate agents with 15 or more self-contained units.

<i>Period</i>	<i>New South Wales</i>	<i>Victoria</i>	<i>Queensland</i>	<i>South Australia</i>	<i>Western Australia</i>	<i>Tasmania</i>	<i>Northern Territory</i>	<i>Australian Capital Territory</i>	<i>Australia</i>
BED SPACES (no.)									
2003									
March Quarter	6 431	3 181	41 145	1 165	np	np	np	np	58 591
June Quarter	6 270	3 035	40 952	1 190	np	np	np	672	58 246
September Quarter	6 458	np	40 561	1 102	np	np	np	np	58 595
December Quarter	6 550	3 858	40 063	np	np	np	np	np	58 041
2005									
March Quarter	9 368	3 235	39 122	np	np	np	np	np	59 959
June Quarter	9 457	3 374	38 783	np	np	np	np	np	59 605
September Quarter	6 229	3 346	39 870	np	np	np	np	np	57 397
December Quarter	6 148	3 383	40 824	np	np	np	np	np	58 331
PERSONS EMPLOYED (no.)									
2003									
March Quarter	546	233	1 783	73	np	np	np	np	3 021
June Quarter	553	210	1 712	74	np	np	np	37	2 921
September Quarter	554	np	1 709	66	np	np	np	np	2 934
December Quarter	540	216	1 658	np	np	np	np	np	2 859
2005									
March Quarter	536	203	1 458	np	np	np	np	np	2 645
June Quarter	584	222	1 432	np	np	np	np	np	2 640
September Quarter	541	235	1 413	np	np	np	np	np	2 599
December Quarter	543	230	1 448	np	np	np	np	np	2 650
UNIT NIGHTS OCCUPIED ('000)									
2003									
March Quarter	81.8	44.1	626.7	17.0	np	np	np	np	866.9
June Quarter	64.5	39.2	543.1	13.8	np	np	np	10.9	737.2
September Quarter	70.3	np	703.0	13.4	np	np	np	np	917.9
December Quarter	80.5	57.0	666.6	np	np	np	np	np	901.2
2005									
March Quarter	103.1	47.3	610.2	np	np	np	np	np	861.3
June Quarter	69.6	40.0	538.6	np	np	np	np	np	735.1
September Quarter	67.8	45.2	707.3	np	np	np	np	np	919.0
December Quarter	75.5	42.0	676.9	np	np	np	np	np	905.4
UNIT OCCUPANCY RATE (%)									
2003									
March Quarter	62.3	63.9	63.7	68.5	np	np	np	np	64.4
June Quarter	50.3	60.0	56.7	55.1	np	np	np	69.7	56.0
September Quarter	52.2	np	73.7	57.0	np	np	np	np	68.6
December Quarter	55.9	65.5	69.5	np	np	np	np	np	66.7
2005									
March Quarter	58.5	67.7	65.7	np	np	np	np	np	65.2
June Quarter	40.2	58.4	58.3	np	np	np	np	np	56.1
September Quarter	52.0	60.5	74.4	np	np	np	np	np	70.3
December Quarter	57.1	62.5	70.1	np	np	np	np	np	68.6

np not available for publication but included in totals where applicable, unless otherwise indicated

<i>Period</i>	<i>New South Wales</i>	<i>Victoria</i>	<i>Queensland</i>	<i>South Australia</i>	<i>Western Australia</i>	<i>Tasmania</i>	<i>Northern Territory</i>	<i>Australian Capital Territory</i>	<i>Australia</i>
---------------	------------------------	-----------------	-------------------	------------------------	--------------------------	-----------------	---------------------------	-------------------------------------	------------------

UNIT LETTINGS ('000)

2003									
March Quarter	22.8	12.9	147.5	4.7	np	np	np	np	216.4
June Quarter	20.1	10.1	138.9	3.9	np	np	np	4.7	199.6
September Quarter	20.8	np	186.6	4.2	np	np	np	np	250.5
December Quarter	24.4	12.4	188.5	np	np	np	np	np	257.2
2005									
March Quarter	31.7	12.3	182.1	np	np	np	np	np	253.4
June Quarter	25.4	9.1	172.9	np	np	np	np	np	231.7
September Quarter	22.0	10.6	205.8	np	np	np	np	np	271.3
December Quarter	27.5	10.9	223.5	np	np	np	np	np	296.4

AVERAGE LENGTH OF STAY (days)

2003									
March Quarter	3.6	3.4	4.2	3.6	np	np	np	np	4.0
June Quarter	3.2	3.9	3.9	3.6	np	np	np	2.3	3.7
September Quarter	3.4	np	3.8	3.2	np	np	np	np	3.7
December Quarter	3.3	4.6	3.5	np	np	np	np	np	3.5
2005									
March Quarter	3.3	3.8	3.4	np	np	np	np	np	3.4
June Quarter	2.7	4.4	3.1	np	np	np	np	np	3.2
September Quarter	3.1	4.3	3.4	np	np	np	np	np	3.4
December Quarter	2.7	3.8	3.0	np	np	np	np	np	3.1

TAKINGS FROM ACCOMMODATION (\$'000)

2003									
March Quarter	10 428	5 131	64 111	1 549	np	np	np	np	90 053
June Quarter	6 483	4 272	49 733	1 156	np	np	np	929	68 208
September Quarter	8 241	np	65 279	1 081	np	np	np	np	89 061
December Quarter	10 191	6 711	71 631	np	np	np	np	np	98 094
2005									
March Quarter	15 302	5 812	70 018	np	np	np	np	np	102 597
June Quarter	8 109	4 754	54 754	np	np	np	np	np	75 884
September Quarter	9 368	6 115	77 796	np	np	np	np	np	102 317
December Quarter	10 179	5 396	79 248	np	np	np	np	np	105 436

np not available for publication but included in totals where applicable, unless otherwise indicated

Period	New South Wales	Victoria	Queensland	South Australia	Western Australia	Tasmania	Northern Territory	Australian Capital Territory	Australia
LETTING ENTITIES (a) (no.)									
2003									
March Quarter	160	30	361	17	25	9	2	3	607
June Quarter	159	29	359	17	25	9	2	3	603
September Quarter	158	31	359	16	25	8	2	3	602
December Quarter	158	31	355	16	25	8	2	3	598
2005									
March Quarter	161	32	343	15	22	8	2	3	586
June Quarter	158	33	342	15	21	8	2	3	582
September Quarter	153	34	346	15	21	8	2	3	582
December Quarter	152	34	347	15	22	8	2	3	583
SINGLE BEDROOM HOLIDAY FLATS, UNITS AND HOUSES (no.)									
2003									
March Quarter	929	335	3 204	119	347	45	np	np	5 064
June Quarter	915	327	2 966	119	292	np	np	61	4 755
September Quarter	904	312	2 963	106	294	39	np	np	4 709
December Quarter	967	301	3 158	104	225	39	np	np	4 880
2005									
March Quarter	867	301	2 963	107	250	40	np	np	4 616
June Quarter	853	290	2 924	109	254	38	np	np	4 557
September Quarter	810	286	3 098	112	322	48	np	np	4 765
December Quarter	801	290	3 071	106	313	46	np	np	4 716
MULTIPLE BEDROOM HOLIDAY FLATS, UNITS AND HOUSES (no.)									
2003									
March Quarter	8 260	1 759	11 074	772	875	128	np	np	23 032
June Quarter	8 409	1 457	10 817	788	939	np	np	111	22 704
September Quarter	8 435	1 569	10 609	798	894	115	np	np	22 585
December Quarter	8 705	1 815	10 534	826	961	122	np	np	23 130
2005									
March Quarter	9 056	2 164	10 362	911	856	137	np	np	23 652
June Quarter	9 019	1 994	10 318	897	842	145	np	np	23 379
September Quarter	8 599	2 200	10 414	865	817	141	np	np	23 200
December Quarter	8 610	2 349	10 672	891	846	144	np	np	23 676
TOTAL HOLIDAY FLATS, UNITS AND HOUSES (no.)									
2003									
March Quarter	9 189	2 094	14 278	891	1 222	173	np	np	28 096
June Quarter	9 324	1 784	13 783	907	1 231	np	np	172	27 459
September Quarter	9 339	1 881	13 572	904	1 188	154	np	np	27 294
December Quarter	9 672	2 116	13 692	930	1 186	161	np	np	28 010
2005									
March Quarter	9 923	2 465	13 325	1 018	1 106	177	np	np	28 268
June Quarter	9 872	2 284	13 242	1 006	1 096	183	np	np	27 936
September Quarter	9 409	2 486	13 512	977	1 139	189	np	np	27 965
December Quarter	9 411	2 639	13 743	997	1 159	190	np	np	28 392

np not available for publication but included in totals where applicable, unless otherwise indicated

(a) The number of owners, managers or real estate agents with 15 or more self-contained units.

Period	New South Wales	Victoria	Queensland	South Australia	Western Australia	Tasmania	Northern Territory	Australian Capital Territory	Australia
BED SPACES (no.)									
2003									
March Quarter	47 756	9 716	57 975	4 619	5 467	829	np	np	127 508
June Quarter	48 960	9 087	57 500	4 897	5 702	np	np	672	128 031
September Quarter	49 785	9 950	57 630	4 799	5 466	710	np	np	129 370
December Quarter	51 369	10 850	56 808	5 102	5 381	753	np	np	131 275
2005									
March Quarter	49 387	14 687	53 915	5 753	6 306	804	np	np	131 893
June Quarter	49 160	14 048	53 027	5 591	6 184	829	np	np	129 879
September Quarter	48 538	15 210	54 713	5 581	6 164	823	np	np	132 068
December Quarter	48 535	15 870	55 779	5 935	6 125	894	np	np	134 177
UNIT NIGHTS OCCUPIED ('000)									
2003									
March Quarter	366.8	91.5	782.2	34.9	72.8	11.4	np	np	1 377.3
June Quarter	265.7	44.8	672.3	26.0	58.2	np	np	10.9	1 089.5
September Quarter	283.2	60.6	867.4	21.3	55.9	5.1	np	np	1 313.3
December Quarter	373.6	64.5	830.3	36.5	60.4	7.7	np	np	1 389.8
2005									
March Quarter	394.6	96.2	747.2	42.8	61.7	11.3	np	np	1 371.8
June Quarter	253.0	51.8	646.7	26.9	51.6	7.7	np	np	1 056.8
September Quarter	269.1	55.6	871.6	23.1	63.6	7.7	np	np	1 310.9
December Quarter	324.2	53.9	836.0	27.5	74.4	10.0	np	np	1 343.1
UNIT OCCUPANCY RATE (%)									
2003									
March Quarter	44.4	49.1	60.9	43.5	66.2	73.3	np	np	54.5
June Quarter	31.3	28.1	53.6	32.1	51.9	np	np	69.7	43.7
September Quarter	33.1	35.8	69.6	25.7	51.2	35.6	np	np	52.5
December Quarter	42.0	33.7	65.9	42.6	55.3	52.1	np	np	54.0
2005									
March Quarter	44.2	43.7	62.3	46.7	62.0	71.0	np	np	54.0
June Quarter	28.2	25.4	53.7	29.4	51.7	46.5	np	np	41.7
September Quarter	31.2	24.3	70.1	25.7	60.7	44.3	np	np	51.0
December Quarter	37.4	22.9	66.2	30.0	69.7	57.1	np	np	51.6
UNIT LETTINGS ('000)									
2003									
March Quarter	60.6	22.5	173.0	8.2	16.2	4.9	np	np	293.2
June Quarter	51.6	11.5	163.9	7.8	16.8	np	np	4.7	261.9
September Quarter	51.8	12.2	212.9	5.5	15.3	2.6	np	np	311.0
December Quarter	72.0	14.1	218.5	7.9	20.1	3.8	np	np	340.3
2005									
March Quarter	72.1	26.5	207.2	10.7	14.3	5.1	np	np	339.7
June Quarter	54.3	12.9	195.4	7.3	11.3	3.5	np	np	289.6
September Quarter	54.9	12.8	233.6	6.9	20.4	3.9	np	np	337.7
December Quarter	69.5	13.8	259.5	6.0	22.1	5.3	np	np	380.4

np not available for publication but included in totals where applicable, unless otherwise indicated

<i>Period</i>	<i>New South Wales</i>	<i>Victoria</i>	<i>Queensland</i>	<i>South Australia</i>	<i>Western Australia</i>	<i>Tasmania</i>	<i>Northern Territory</i>	<i>Australian Capital Territory</i>	<i>Australia</i>
---------------	------------------------	-----------------	-------------------	------------------------	--------------------------	-----------------	---------------------------	-------------------------------------	------------------

AVERAGE LENGTH OF STAY (*days*)

2003									
March Quarter	6.1	4.1	4.5	4.3	4.5	2.3	np	np	4.7
June Quarter	5.1	3.9	4.1	3.3	3.5	np	np	2.3	4.2
September Quarter	5.5	5.0	4.1	3.9	3.6	2.0	np	np	4.2
December Quarter	5.2	4.6	3.8	4.6	3.0	2.0	np	np	4.1
2005									
March Quarter	5.5	3.6	3.6	4.0	4.3	2.2	np	np	4.0
June Quarter	4.7	4.0	3.3	3.7	4.6	2.2	np	np	3.6
September Quarter	4.9	4.3	3.7	3.3	3.1	2.0	np	np	3.9
December Quarter	4.7	3.9	3.2	4.6	3.4	1.9	np	np	3.5

TAKINGS FROM ACCOMMODATION (\$'000)

2003									
March Quarter	39 934	11 083	77 395	2 927	6 622	929	np	np	140 558
June Quarter	21 001	5 037	60 068	2 012	4 884	np	np	929	95 000
September Quarter	24 331	8 445	77 220	1 727	4 913	383	np	np	119 286
December Quarter	41 660	7 839	86 327	3 096	6 046	691	np	np	147 481
2005									
March Quarter	45 289	10 275	83 352	4 468	7 562	1 109	np	np	153 838
June Quarter	20 461	5 757	63 278	2 654	4 683	646	np	np	99 612
September Quarter	26 536	7 741	91 184	2 190	5 265	645	np	np	135 985
December Quarter	36 811	6 736	94 538	2 915	7 106	889	np	np	150 755

np not available for publication but included in totals where applicable, unless otherwise indicated

<i>Period</i>	<i>New South Wales</i>	<i>Victoria</i>	<i>Queensland</i>	<i>South Australia</i>	<i>Western Australia</i>	<i>Tasmania</i>	<i>Northern Territory</i>	<i>Australian Capital Territory</i>	<i>Australia</i>
ESTABLISHMENTS (no.)									
2003									
March Quarter	123	75	155	32	73	27	27	5	517
June Quarter	122	75	148	32	71	25	28	5	506
September Quarter	116	72	147	30	72	24	28	5	494
December Quarter	114	71	148	31	73	26	26	5	494
2005									
March Quarter	106	67	133	30	72	25	25	5	463
June Quarter	103	67	132	29	70	24	26	5	456
September Quarter	104	67	131	27	67	24	27	5	452
December Quarter	105	70	130	29	67	24	26	5	456
BED SPACES (no.)									
2003									
March Quarter	12 250	8 477	15 643	2 673	5 491	1 932	3 141	769	50 376
June Quarter	12 015	8 489	15 191	2 775	5 398	1 844	3 281	769	49 762
September Quarter	11 125	8 237	15 299	2 766	5 388	1 740	3 254	769	48 578
December Quarter	11 222	7 795	15 756	2 695	5 480	1 943	2 928	769	48 588
2005									
March Quarter	11 594	8 194	14 426	2 552	5 176	1 909	2 974	796	47 621
June Quarter	11 245	8 259	14 460	2 573	5 118	1 849	3 201	798	47 503
September Quarter	11 297	8 369	14 671	2 354	5 161	1 919	3 650	805	48 226
December Quarter	11 436	8 486	14 666	2 420	5 184	1 816	3 565	759	48 332
PERSONS EMPLOYED (no.)									
2003									
March Quarter	669	504	1 175	108	286	154	227	91	3 214
June Quarter	681	481	1 238	111	290	152	323	87	3 363
September Quarter	631	462	1 273	142	294	146	320	105	3 373
December Quarter	654	483	1 408	156	287	185	229	104	3 506
2005									
March Quarter	669	464	1 337	134	323	167	311	94	3 499
June Quarter	679	448	1 247	118	323	156	346	103	3 420
September Quarter	674	442	1 302	103	321	149	319	94	3 404
December Quarter	721	463	1 231	107	304	161	252	98	3 337
GUEST NIGHTS OCCUPIED (no.)									
2003									
March Quarter	639 513	340 514	667 547	92 877	221 971	55 799	97 562	32 484	2 148 267
June Quarter	520 010	243 425	708 691	66 432	208 589	31 956	155 465	29 736	1 964 304
September Quarter	505 070	199 817	755 721	70 175	182 359	17 027	183 985	31 855	1 946 009
December Quarter	666 886	298 572	752 813	82 834	216 363	36 042	110 212	33 910	2 197 632
2005									
March Quarter	662 554	376 797	678 745	96 129	235 251	72 383	86 329	37 347	2 245 535
June Quarter	502 848	255 873	713 766	72 336	210 680	29 839	128 428	25 592	1 939 362
September Quarter	512 151	234 277	749 202	66 323	193 813	19 672	193 296	41 361	2 010 095
December Quarter	615 328	327 039	696 058	85 871	208 494	37 572	112 451	27 400	2 110 213

(a) Comprising establishments with 25 or more bed spaces.

<i>Period</i>	<i>New South Wales</i>	<i>Victoria</i>	<i>Queensland</i>	<i>South Australia</i>	<i>Western Australia</i>	<i>Tasmania</i>	<i>Northern Territory</i>	<i>Australian Capital Territory</i>	<i>Australia</i>
BED OCCUPANCY RATE (%)									
2003									
March Quarter	58.6	45.6	47.6	39.1	44.9	32.1	34.5	46.9	47.8
June Quarter	48.4	32.8	51.4	26.6	42.5	19.0	52.1	42.5	43.9
September Quarter	50.2	27.9	53.8	27.6	37.0	10.6	61.5	45.0	44.2
December Quarter	64.6	42.2	52.9	33.4	42.9	21.4	40.9	47.9	49.7
2005									
March Quarter	63.9	51.7	52.6	41.9	50.7	42.1	32.3	52.1	52.7
June Quarter	49.6	34.4	54.6	30.9	45.2	17.9	44.1	35.2	45.2
September Quarter	49.3	30.8	55.8	30.6	40.8	11.4	57.6	55.8	45.5
December Quarter	58.5	42.5	51.6	38.6	43.7	22.5	34.3	39.2	47.6
GUEST ARRIVALS (no.)									
2003									
March Quarter	216 479	116 062	319 132	44 767	76 696	33 868	59 200	13 895	880 099
June Quarter	172 621	78 825	312 741	27 650	67 722	21 556	80 181	11 962	773 258
September Quarter	170 489	63 018	324 690	30 852	62 980	10 512	95 357	13 942	771 840
December Quarter	228 442	103 216	325 038	35 780	77 113	25 297	66 880	14 105	875 871
2005									
March Quarter	223 276	119 437	296 358	36 333	76 633	38 969	52 079	15 033	858 118
June Quarter	195 397	78 962	306 061	24 828	79 755	14 654	69 234	11 885	780 776
September Quarter	193 785	70 814	309 562	24 297	62 200	9 267	81 805	18 810	770 540
December Quarter	228 104	98 806	300 366	29 433	76 148	20 563	53 028	15 593	822 041
AVERAGE LENGTH OF STAY (days)									
2003									
March Quarter	3.0	2.9	2.1	2.1	2.9	1.6	1.6	2.3	2.4
June Quarter	3.0	3.1	2.3	2.4	3.1	1.5	1.9	2.5	2.5
September Quarter	3.0	3.2	2.3	2.3	2.9	1.6	1.9	2.3	2.5
December Quarter	2.9	2.9	2.3	2.3	2.8	1.4	1.6	2.4	2.5
2005									
March Quarter	3.0	3.2	2.3	2.6	3.1	1.9	1.7	2.5	2.6
June Quarter	2.6	3.2	2.3	2.9	2.6	2.0	1.9	2.2	2.5
September Quarter	2.6	3.3	2.4	2.7	3.1	2.1	2.4	2.2	2.6
December Quarter	2.7	3.3	2.3	2.9	2.7	1.8	2.1	1.8	2.6
TAKINGS FROM ACCOMMODATION (\$'000)									
2003									
March Quarter	15 716	7 790	12 702	1 918	4 242	1 003	1 860	794	46 024
June Quarter	12 203	5 319	13 715	1 194	3 832	535	3 141	606	40 544
September Quarter	12 101	4 696	14 834	1 240	3 268	299	4 148	762	41 347
December Quarter	16 636	6 730	15 037	1 485	4 158	711	2 465	773	47 995
2005									
March Quarter	17 248	9 470	14 913	1 992	4 879	1 470	2 007	905	52 883
June Quarter	12 633	6 527	14 424	1 380	4 220	562	2 794	644	43 184
September Quarter	13 087	6 124	16 075	1 192	3 898	384	4 555	1 013	46 328
December Quarter	16 707	8 150	15 035	1 634	4 337	772	2 529	730	49 893

(a) Comprising establishments with 25 or more bed spaces.

EXPLANATORY NOTES

- INTRODUCTION**
- 1** This publication presents data from the quarterly Survey of Tourist Accommodation (STA). The STA is a mailout collection that completely enumerates all in-scope accommodation establishments within Australia.
- SCOPE**
- 2** From March quarter 2005, the scope of the STA comprises the following categories of establishments:
- licensed hotels and resorts with facilities and 5 or more rooms
 - motels, private hotels and guest houses with facilities and 5 or more rooms
 - serviced apartments with 5 or more units
 - caravan parks with 40 or more powered sites
 - holiday flats, units and houses of letting entities with 15 or more rooms or units
 - visitor hostels with 25 or more bed spaces.
- 3** With the exception of caravan parks, these establishments provide predominantly short-term non-residential accommodation, i.e. accommodation which is not leased, and which is provided to guests who would generally stay for periods of less than two months. Some of these establishments also provide long-term residential accommodation. The amount of such activity is considered to be insignificant and is included in the data presented in this publication.
- 4** Caravan parks provide either short-term or long-term accommodation. If a caravan park has the majority of sites occupied by paying guests who have stayed continuously for two months or more during the survey period, the caravan park is classified as long-term. Data for caravan parks are presented by short-term and long-term in this publication.
- 5** Previous to March quarter 2005, the scope of the STA comprised:
- licensed hotels and resorts with facilities and 15 or more rooms
 - motels, private hotels and guest houses with facilities and 15 or more rooms
 - serviced apartments with 15 or more units.
- 6** For the four quarters of 2000 and 2003, the scope of the STA was expanded to include:
- caravan parks with 40 or more powered sites
 - holiday flats, units and houses of letting entities with 15 or more rooms or units
 - visitor hostels with 25 or more bed spaces.
- COVERAGE**
- 7** The main source of coverage is from the Australian Automobile Association through AAA Tourism Pty Ltd. This is supplemented by notification of new tourism developments and their likely opening dates in selected guides, major tourism journals and periodicals and newspapers. Periodic comparison with lists of accommodation establishments provided by the various tourism organisations and industry associations is also undertaken.
- TAKINGS FROM ACCOMMODATION**
- 8** From 1 July 2000, takings from accommodation include gross revenue from the provision of accommodation, including GST. Takings from meals are excluded. Where businesses are unable to provide the data inclusive of GST, it is automatically adjusted by the ABS prior to aggregation and release in output.
- STAR GRADING**
- 9** Star grade classifications of establishments are continuously revised by AAA Tourism Pty Ltd. This should be taken into account when making comparisons over time. Any queries regarding the star grading process should be directed to AAA Tourism Pty Ltd on (03) 8601 2200 or email enquiries@aaatourism.com.au.
- 10** Data by star grade for states and territories are no longer presented in this publication. These data are included in the data cubes that accompany this publication: *Tourist Accommodation, Small Area Data* (cat. no. 8635.0.55.002 for national data and cat. no. 8635.1.55.001 – 8635.8.55.001 for state/territory data).

EXPLANATORY NOTES *continued*

STATISTICAL GEOGRAPHY

11 Small area statistics for 2005 are classified to the Australian Standard Geographical Classification (ASGC), 2004 Edition (cat. no. 1216.0). Data are coded to the statistical local area (SLA) level.

12 These SLA data are aggregated to tourism regions as defined by relevant state and territory tourism organisations. Tourism regions are reviewed annually and are subject to boundary and name changes. Where changes have occurred care should be taken when making comparisons with previously published data at this level.

13 Data by tourism regions are no longer presented in this publication. Small area data are provided in the data cubes that accompany this publication: *Tourist Accommodation, Small Area Data* (cat. no. 8635.0.55.002 for national data and cat. no. 8635.1.55.001 – 8635.8.55.001 for state/territory data).

14 Details of SLAs, the composition of tourism regions and maps of tourism regions are provided in the ABS publication *Tourism Region Maps and Concordance Files, Australia* (cat. no. 9503.0.55.001) available from the ABS web site <www.abs.gov.au>.

DATA QUALITY

15 The survey does not have a sample component and the data are not subject to sampling variability. However, other inaccuracies collectively referred to as non-sampling error may affect the data. These non-sampling errors may arise from a number of sources, including:

- errors in the reporting of data by providers
- errors in the process of capturing data
- imputation for missing data
- definition and classification errors
- incomplete coverage.

16 Every effort has been made to reduce non-sampling error to a minimum by careful design and testing of questionnaires, and efficient operating procedures and systems used to compile statistics.

Response rates

17 The December quarter 2005 response rates were:

RESPONSE RATES

Activity	<i>December Qtr 2005</i>
	%
Licensed hotels with facilities	
with 5 to 14 rooms	83.3
with 15 or more rooms	90.1
with 5 or more rooms	87.6
Motels and guest houses	
with 5 to 14 rooms	84.1
with 15 or more rooms	89.2
with 5 or more rooms	87.5
Serviced apartments	
with 5 to 14 rooms	86.9
with 15 or more rooms	92.1
with 5 or more rooms	90.7
Hotels, motels and serviced apartments	
with 5 to 14 rooms	84.3
with 15 or more rooms	90.0
with 5 or more rooms	88.1
Caravan parks	90.1
Holiday flats, units and houses	89.2
Visitor hostels	81.8

EXPLANATORY NOTES *continued*

Imputation rates

18 Missing data items are replaced by imputed values based on reported data. Average quarterly movements are applied to previously reported data for each non-responding unit to estimate values for missing data items. Only if previously reported data are not available, then data from a similar unit is used as a 'donor' for the missing data items. (Note that donor imputation was often used for non-responding units for hotels, motels and serviced apartments with 5 to 14 rooms as previous data was usually unavailable.)

19 The December quarter 2005 imputation rates were:

IMPUTATION RATES

<i>Activity</i>	<i>Nights occupied (a)</i>	<i>Takings from accommodation</i>
	%	%
Licensed hotels with facilities		
with 5 to 14 rooms	14.2	13.3
with 15 or more rooms	3.3	2.6
with 5 or more rooms	3.7	2.7
Motels and guest houses		
with 5 to 14 rooms	15.4	14.9
with 15 or more rooms	10.0	9.8
with 5 or more rooms	10.5	10.3
Serviced apartments		
with 5 to 14 rooms	14.8	15.1
with 15 or more rooms	6.4	6.3
with 5 or more rooms	6.8	6.7
Hotels, motels and serviced apartments		
with 5 to 14 rooms	15.1	14.7
with 15 or more rooms	6.4	5.4
with 5 or more rooms	6.9	5.8
Caravan parks	9.5	8.4
Holiday flats, units and houses	10.4	10.4
Visitor hostels	15.1	14.7

(a) Based on room nights for hotels, motels and serviced apartments; site nights for caravan parks; unit nights for holiday flats, units and houses; and guest nights for visitor hostels.

BREAK IN TIME SERIES

20 In June quarter 2003, the ABS identified 132 licensed hotels with facilities, motels and guest houses and serviced apartments with 15 or more rooms which had been operating for a number of quarters but were not on the STA frame. These additional establishments were included in the STA from June quarter 2003.

21 The ABS also identified 74 caravan parks which were operating in the March quarter 2003 but were not on the STA frame. These caravan parks were included in the June, September and December quarter 2003 data, but not in the March quarter 2003 data.

22 The addition of these establishments resulted in a break in time series between March and June quarters 2003. The impact of the break in time series for hotels, motels and serviced apartments is explained in Appendix 1, *Tourist Accommodation, Australia, December quarter 2003* (cat. no. 8635.0). The impact of the break in series for caravan parks is explained in the Appendix of *Tourist Accommodation, Australia, Expanded Scope Collection, Year ended 31 December quarter 2003* (cat. no. 8635.0.55.001). Particular care needs to be taken for all calculations of percentage changes that cross the break in series.

EXPLANATORY NOTES *continued*

SEASONAL ADJUSTMENT

23 Seasonal adjustment is a means of removing the estimated effects of normal seasonal variation from the original time series so that the effect of other influences on the series may be more clearly recognised. Seasonal adjustment procedures do not aim to remove the irregular or non-seasonal influences which may be present in any particular quarter. Irregular influences that are highly volatile can make it difficult to interpret the movement of the series even after adjustment for seasonal variation, and cannot be assumed to indicate changes in the trend.

24 The way in which seasonally adjusted and trend estimates were calculated changed from a Forward Factor methodology to a Concurrent methodology in March quarter 2003. The Forward Factor method relied on an annual analysis of the original time series to estimate seasonal factors that were to be applied in the forthcoming four quarters. Under this method the projected seasonal factors, or forward factors, were not updated until the next annual analysis. The Concurrent methodology uses the most up to date original time series available at each reference period to estimate seasonal factors thus eliminating the need to use projected seasonal factors.

TREND ESTIMATES

25 Smoothing the seasonally adjusted series reduces the impact of the irregular component of the seasonally adjusted series and creates the trend estimates. The trend estimates are derived by applying a 7-term Henderson moving average to the quarterly seasonally adjusted series. The Henderson moving average used in the middle of the time series is symmetric but, as the end of a time series is approached, asymmetric forms of the symmetric moving average are applied. Unlike the weights of the standard 7-term Henderson moving average, the weights used with the quarterly data have been tailored to suit the particular characteristics of individual series.

26 While these techniques enable trend estimates for the latest period to be produced, the process does result in revisions to the trend estimates in recent quarters, particularly as additional original estimates become available. For further information refer to *Information Paper: A Guide to Interpreting Time Series - Monitoring Trends, 2003* (cat. no. 1349.0) available at the ABS web site <www.abs.gov.au>.

EFFECTS OF ROUNDING

27 Where figures have been rounded, discrepancies may occur between totals and the sum of the component items.

RELATED PUBLICATIONS

28 Other ABS publications and products which may be of interest are outlined below. Please note, older publications may no longer be available through ABS bookshops but are available through ABS libraries. All publications released from 1998 onwards are available on the ABS web site <www.abs.gov.au>.

Tourist Accommodation, Small Area Data (cat. no. 8635.0.55.002) (data cube for Australia – issued quarterly)

Tourist Accommodation, Small Area Data (cat. no. 8635.1.55.001–8635.8.55.001) (data cubes for each state/territory – issued quarterly)

Tourism Region Maps and Concordance Files, Australia (cat. no. 9503.0.55.001) (annual)

Tourist Accommodation, Australia, Expanded Scope Collection (cat. no. 8635.0.55.001) (irregular)

Short-term Visitor Arrivals Estimates, Australia (cat. no. 3401.0.55.001) (issued monthly)

Overseas Arrivals and Departures, Australia (cat. no. 3401.0) (issued monthly)

Australian National Accounts, Tourism Satellite Account (cat. no. 5249.0) (annual)

Directory of Tourism Statistics, 2001 (cat. no. 1130.0) (irregular)

EXPLANATORY NOTES *continued*

RELATED PUBLICATIONS *continued*

29 Current publications and other products released by the ABS are listed in the *Catalogue of Publications and Products* (cat. no. 1101.0). The catalogue is available from any ABS office or the ABS web site <www.abs.gov.au>. The ABS also issues a daily Release Advice on the web site which details products to be released in the week ahead.

ABS DATA AVAILABLE ON REQUEST

30 As well as the statistics included in this publication, the ABS has other relevant data available on request. Inquiries should be made to the National Information and Referral Service on 1300 135 070.

GLOSSARY

Average length of stay	<p>Average number of days each guest stayed during the reference period. It is a derived item calculated by dividing the number of guest nights occupied by the number of guest arrivals with the result expressed as a number of days,</p> $\text{Average length of stay(days)} = \frac{\text{Guest nights occupied}}{\text{Guest arrivals}}$
Average takings per available room night	<p>The takings from accommodation divided by the total number of room nights available for the survey period,</p> $\text{Average takings per available room night(\$)} = \frac{\text{Takings from accommodation}}{\text{Room nights available}}$
Average takings per room night occupied	<p>The takings from accommodation divided by the total number of room nights occupied for the survey period,</p> $\text{Average takings per room night occupied(\$)} = \frac{\text{Takings from accommodation}}{\text{Room nights occupied}}$
Bed occupancy rate	<p>The bed occupancy rate represents bed occupancy expressed as a percentage of total capacity available during the survey period,</p> $\text{Bed occupancy rate (\%)} = \frac{\text{Guest nights occupied}}{\text{Guest nights available}} * 100$
Bed spaces	<p>The maximum number of bed spaces normally in place available to accommodate paying guests during the survey period. Three-quarter beds are counted as one bed space; double beds as two bed spaces. Cots and divans not normally used as beds are excluded.</p>
Cabins, flats, units and villas	<p>The maximum number of cabins, flats, units and villas available at caravan parks for accommodating paying guests during the survey period.</p>
Capacity	<p>Capacity in terms of rooms/units/apartments/suites, visitor hostel bed spaces, holiday flats/units/houses or caravan park sites is the maximum number available to accommodate paying guests on the last day of the survey period. Capacity closed temporarily for seasonal reasons is included.</p>
Caravan park sites	<p>The measure of total caravan park capacity available for accommodating paying guests during the survey period. Includes on-site vans, other powered sites, unpowered sites and cabins, flats, units and villas.</p>
Caravan parks	<p>Establishments with 40 or more powered sites and cabins, flats, units and villas which provide either short-term or long-term accommodation to the general public and which provide powered sites for caravans and toilet, shower and laundry facilities for guests.</p>
Caravan parks, long-term	<p>Caravan parks where the majority of paying guests occupied sites for periods of two months or more.</p>
Caravan parks, short-term	<p>Caravan parks where the majority of paying guests occupied sites for periods of less than two months.</p>
Establishments	<p>The number of licensed hotels and resorts, motels and guest houses, serviced apartments, caravan parks and visitor hostels within the scope of the survey which operated for any part of the survey period, or which closed temporarily for the quarter for seasonal reasons.</p>
Guest arrivals	<p>The total number of paying guests counted only on the first night they stayed at the accommodation establishment during the survey period.</p> <p>For holiday flats, units and houses this is the same as unit lettings.</p> <p>This data item is not collected for caravan parks.</p>
Guest nights available	<p>The total number of nights available to all paying guests during the survey period.</p> <p>This is derived from the number of bed spaces multiplied by the number of days for which they were available during the survey period. For establishments closing (other than for seasonal reasons) or opening during this period, operating periods only are included.</p>

GLOSSARY *continued*

Guest nights occupied	The total number of paying guests counted on each night they stayed at the accommodation establishment during the survey period.
Holiday flats, units and houses	The total number of holiday flats, units and houses (excluding establishments predominantly operated on a time-share basis) operated by letting entities (i.e. owners, managers or real estate agents) who have sole letting rights to at least 15 flats, units or houses for short-term letting. These flats, units or houses should be mainly self-contained in terms of cooking, bath (or shower) and toilet facilities and should not have breakfast available for guests. Data for holiday flats, units or houses include short-term owner operators as well as paying guest accommodation.
Hotels	See licensed hotels and resorts with facilities.
Letting entities	For holiday flats, units and houses, the number of owners, managers or real estate agents within the scope of the survey who operated for any part of the survey period.
Licensed hotels and resorts with facilities	Establishments with five or more rooms which are licensed to operate a public bar and which provide accommodation on a room/suite basis, with a bath/shower and toilet in most guest rooms, but which do not have full cooking facilities (i.e. hot plates and oven/microwave) in most guest rooms.
Motels, private hotels and guest houses with facilities	Establishments with five or more rooms which are not licensed to operate a public bar, and which provide accommodation on a room/suite basis, with a bath/shower and toilet in most guest rooms, but which do not have full cooking facilities (i.e. hot plates and oven/microwave) in most guest rooms.
Multiple bedroom holiday flats, units and houses	The total number of holiday flats, units and houses available with multiple bedrooms.
Occupancy	Occupancy in terms of room nights, unit nights or site nights occupied refers to the total number of nights each room, unit or caravan park was occupied during the survey period. Occupancy in terms of guest nights refers to the total number of paying guests counted on each night they stayed at the accommodation establishment during the survey period.
On-site vans	The maximum number of vans owned or leased by the establishment for the purpose of providing accommodation to the general public.
Other powered sites	The maximum number of sites with provision for connection to electric power supply, available at caravan parks for accommodating paying guests during the survey period, excluding powered sites occupied by on-site vans, and cabins, flats, units and villas.
Other sites permanently reserved	The total number of powered and unpowered sites, on-site vans and cabins, flats, units and villas continuously let for two months or more on the last day of the survey period to tenants who occupy the sites only on a casual or sporadic basis.
Persons employed	The total number of persons working at each accommodation establishment at the end of the survey period (including working proprietors and those working on other than accommodation activities). This data item is not applicable to holiday flats, units and houses let by real estate agents.
Room nights available	The number of rooms/units available multiplied by the number of days for which they were available during the survey period. For establishments closing (other than for seasonal reasons) or opening during this period, operating periods only are included.
Room nights occupied	The number of nights each guest room/unit was occupied by a paying guest during the survey period.
Room occupancy rate	The room occupancy rate represents room occupancy expressed as a percentage of total capacity available during the survey period, $\text{Room occupancy rate (\%)} = \frac{\text{Room nights occupied}}{\text{Room nights available}} * 100$

GLOSSARY *continued*

Room occupancy rate <i>continued</i>	providing that, for establishments closing (other than for seasonal reasons) or opening during the survey period, the denominator of the above expression includes only operating periods.
Rooms	The maximum number of rooms available for accommodating short-term paying guests at each licensed hotel and resort, motel and guest house and serviced apartment during the survey period. Units, apartments and suites are treated as rooms for these types of establishments in these survey results.
Serviced apartments	Establishments with five or more units which mostly comprise self-contained units at the same location, and which are available on a unit/apartment basis to the general public for a minimum of one night. The units should have full cooking facilities (i.e. hot plates and oven/microwave), refrigerator and bath/shower and toilet facilities; all bed linen and towels should be provided, and daily servicing (i.e. cleaning and bed making) must be available through the on-site management, although this service may not necessarily be used.
Single bedroom holiday flats, units and houses	The total number of holiday flats, units and houses available with a single bedroom.
Site nights available	The number of caravan park sites available multiplied by the number of days for which they were available during the survey period. For establishments closing (other than for seasonal reasons) or opening during this period, operating periods only are included.
Site nights occupied	The total number of nights each caravan park site was occupied during the survey period.
Site occupancy rate	<p>The site occupancy rate for caravan parks represents site occupancy expressed as a percentage of total capacity available during the survey period,</p> $\text{Site occupancy rate (\%)} = \frac{\text{Site nights occupied}}{\text{Site nights available}} * 100$ <p>providing that, for establishments closing (other than for seasonal reasons) or opening during the survey period, the denominator of the above expression includes only operating periods.</p>
Sites occupied by long-term guests	The total number of caravan park sites occupied on the last day at the end of the survey period by guests who have stayed continuously for two months or more.
Star grading	<p>The grading of hotels, motels and guest houses with facilities and serviced apartments is based on the classification system owned by AAA Tourism Pty Ltd. The gradings are allocated according to a points system based on the amenities and facilities available to guests. Details of the grading scheme are contained in the publication <i>Accommodation Guide</i> published by AAA Tourism Pty Ltd for each of the individual Australian Motoring Organisations. For the purpose of classifying establishments to a star grading in this publication, 'half' star gradings are ignored (e.g. a two and a half star grading has been shown as two star).</p> <p>While coverage has significantly improved, some establishments (including some competing in the four and five star markets and having significant takings) still remain outside the star grading scheme. These establishments have been given a star grading of 'ungraded'.</p>
Takings from accommodation	<p>Since 1 July 2000, takings from accommodation include gross revenue from the provision of accommodation, including GST. Takings from meals are excluded. In cases where takings from accommodation data cannot be provided inclusive of GST the amount of GST payable is estimated and the data revised accordingly.</p> <p>Takings from accommodation for each month generally represent the takings received during that month. Where payments are received in advance of, or after the provision of accommodation to guests, the monthly figure for takings from accommodation may not necessarily bear a direct relationship to the number of guests accommodated during the month.</p>

GLOSSARY *continued*

Unit lettings	The total number of times a holiday flat, unit or house was occupied by a new tenant, counted only on the first night it was occupied by the new tenant. This is the equivalent of guest arrivals.
Unit nights available	The number of holiday flats, units and houses available multiplied by the number of days for which they were available during the survey period. For establishments closing (other than for seasonal reasons) or opening during this period, operating periods only are included.
Unit nights occupied	The total number of nights each holiday flat, unit or house was occupied during the survey period.
Unit occupancy rate	<p>The unit occupancy rate for holiday flats, units and houses represents unit occupancy expressed as a percentage of total capacity available during the survey period,</p> $\text{Unit occupancy rate (\%)} = \frac{\text{Unit nights occupied}}{\text{Unit nights available}} * 100$ <p>providing that, for letting entities closing (other than for seasonal reasons) or opening during the survey period, the denominator of the above expression includes only operating periods.</p>
Unpowered sites	The maximum number of sites with no provision for connection to electric power supply, available at caravan parks for accommodating paying guests during the survey period.
Visitor hostels	Establishments with 25 or more bed spaces which provide accommodation to visitors on a bed basis (rather than by room). This category does not include establishments providing charity type accommodation (e.g. Salvation Army hostels) nor hotels, motels and guest houses without in-room facilities which provide accommodation on a per room basis.

FOR MORE INFORMATION . . .

INTERNET **www.abs.gov.au** the ABS web site is the best place for data from our publications and information about the ABS.

LIBRARY A range of ABS publications are available from public and tertiary libraries Australia wide. Contact your nearest library to determine whether it has the ABS statistics you require, or visit our web site for a list of libraries.

INFORMATION AND REFERRAL SERVICE

Our consultants can help you access the full range of information published by the ABS that is available free of charge from our web site, or purchase a hard copy publication. Information tailored to your needs can also be requested as a 'user pays' service. Specialists are on hand to help you with analytical or methodological advice.

PHONE 1300 135 070

EMAIL client.services@abs.gov.au

FAX 1300 135 211

POST Client Services, ABS, GPO Box 796, Sydney NSW 2001

FREE ACCESS TO STATISTICS

All ABS statistics can be downloaded free of charge from the ABS web site.

WEB ADDRESS www.abs.gov.au



2863500012052

ISSN 1031 0770

RRP \$31.00